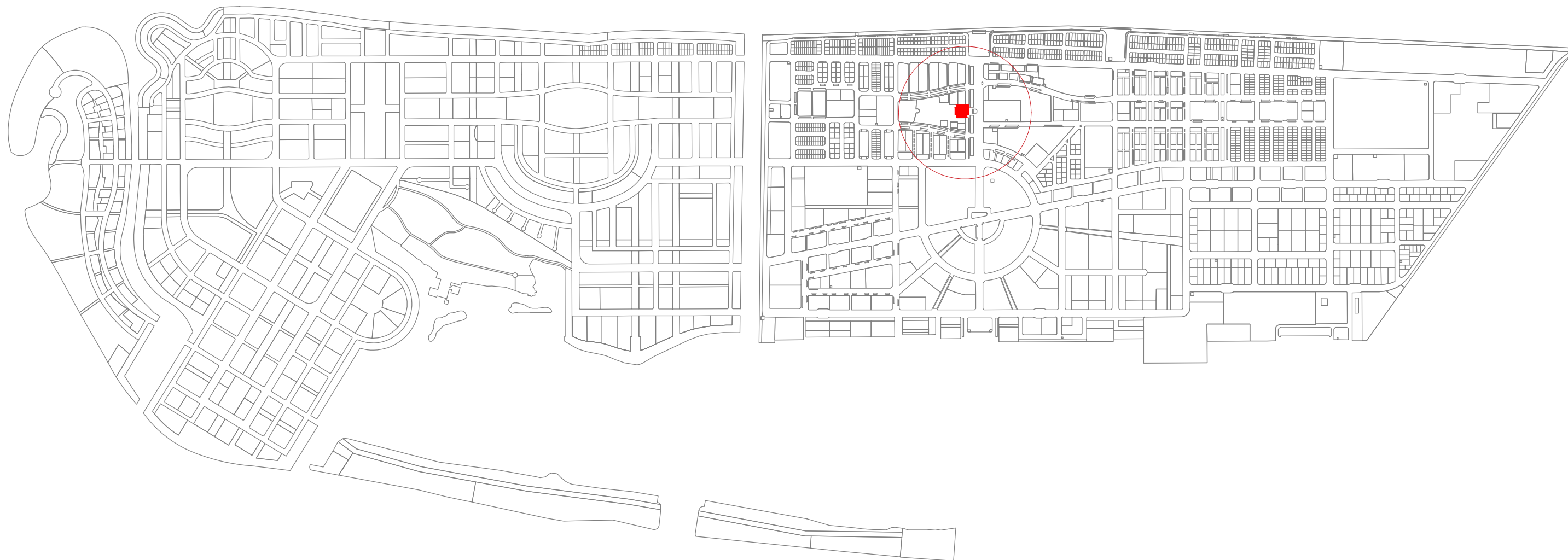


HDC BUILDING FIRE DRAWING  
PROPOSED DESIGNS FOR FIRE DETECTION AND ALARM SYSTEM  
SERVICES DRAWING  
14 MARCH 2024



HOUSING  
DEVELOPMENT  
CORPORATION



**LOCATION PLAN**

SCALE NTS



**HOUSING  
DEVELOPMENT  
CORPORATION**

PLANNING AND DEVELOPMENT DEPARTMENT  
THIRD FLOOR, HDC BUILDING HULHUMALE'  
REPUBLIC OF MALDIVES  
TEL. +(960)3353535, FAX +(960)3358892  
EMAIL : planning@hdc.com.mv

**HDC OFFICE - FIRE  
DETECTION / ALARM SYSTEM**

HULHUMALE'

The drawings, concept and design contained are the properties of HDC. Use of any kind or copy of whole or part of this drawing, concept or design or use on other projects or sites other than that specified on this drawing is strictly prohibited.

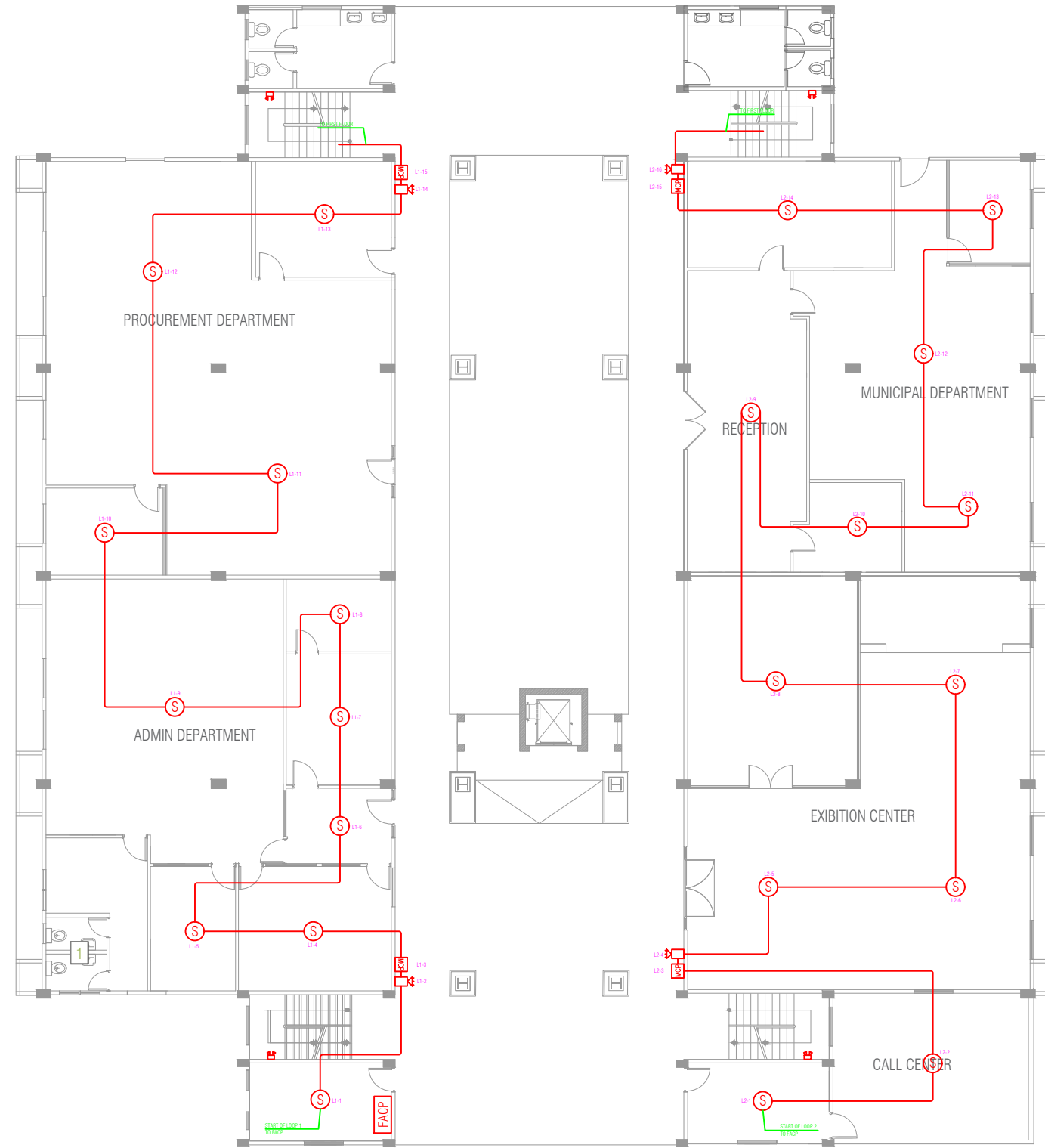
<b>DOCUMENT ID</b>	XXXXX-SSSS-YYYY-(NUMBER)	<b>VERSION</b>	2
<b>DOCUMENT NAME</b>	HDC OFFICE FIRE DRAWING	<b>REVISION</b>	-
<b>AUTHOR</b>	MOHAMED NAIL	<b>CREATED DATE</b>	08/10/2023
<b>LAST UPDATED BY</b>	MOHAMED NAIL	<b>LAST UPDATED DATE</b>	03/14/2023
<b>REVIEWED BY</b>	GEORGE	<b>REVIEWED DATE</b>	03/14/2023
<b>APPROVED BY</b>	MOHAMED YAMIN	<b>APPROVED DATE</b>	08/10/2023
<b>INFORMATION CLASSIFICATION SCHEME</b>	(Public, Open, Confidential, Confidential & Sensitive and Secret)		

REVISION HISTORY			
VER.	DATE	REV.	REVISION
X	DD/MM/YYYY	Z	(DRAFT)
X	DD/MM/YYYY	Z	(FEEDBACK FORMS INCLUDED)
X	DD/MM/YYYY	Z	(MODIFIED FEEDBACK FORMS)
X	DD/MM/YYYY	Z	(REFORMATTED FEEDBACK FORM)

<b>ARCHITECT</b>	Naail
<b>STRUCTURAL ENG.</b>	-
<b>MECHANICAL ENG.</b>	George
<b>ELECTRICAL ENG.</b>	-
<b>SCALE</b>	AS GIVEN

SHEET CONTENT

SHEET NO.  
**A01**



LEGEND:

- ADDRESSABLE SMOKE DETECTOR
- ADDRESSABLE HEAT DETECTOR
- ADDRESSABLE MANUAL CALL POINT
- ADDRESSABLE SOUNDER BEACON
- FIRE ALARM CONTROL PANEL 2-LOOPS WITH 24-HOUR BATTERY BACK-UP
- EMERGENCY LIGHT 8 WATTS
- EXIT SIGN 8 WATTS
- SAME AS THE ABOVE BUT DIRECTIONAL

GROUND FLOOR - FIRE DETECTION & ALARM LAYOUT

SCALE 1:200



PLANNING AND DEVELOPMENT DEPARTMENT  
THIRD FLOOR, HDC BUILDING HULHUMALE  
REPUBLIC OF MALDIVES  
TEL. +(960)3353535, FAX +(960)3358892  
EMAIL : planning@hdc.com.mv

HDC OFFICE - FIRE DETECTION / ALARM SYSTEM  
HULHUMALE'

The drawings, concept and design contained are the properties of HDC. Use of any kind or copy of whole or part of this drawing, concept or design or use on other projects or sites other than that specified on this drawing is strictly prohibited.

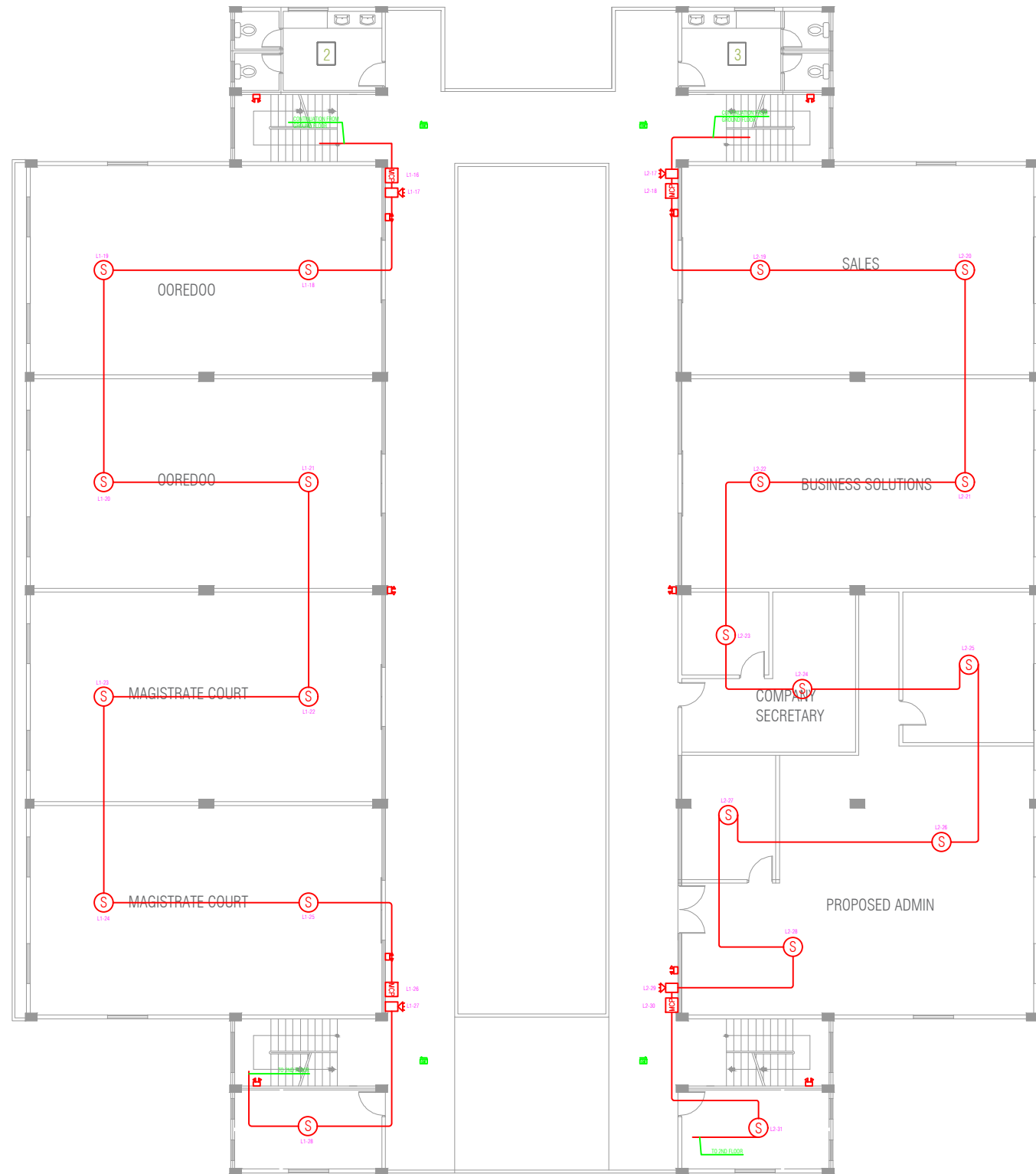
DOCUMENT ID	XXXXX-SSSS-YYYY-(NUMBER)	VERSION	2
<b>DOCUMENT NAME</b>	HDC OFFICE FIRE DRAWING	<b>REVISION</b>	-
<b>AUTHOR</b>	MOHAMED NAIL	<b>CREATED DATE</b>	08/10/2023
<b>LAST UPDATED BY</b>	MOHAMED NAIL	<b>LAST UPDATED DATE</b>	03/14/2023
<b>REVIEWED BY</b>	GEORGE	<b>REVIEWED DATE</b>	03/14/2023
<b>APPROVED BY</b>	MOHAMED YAMIN	<b>APPROVED DATE</b>	08/10/2023
<b>INFORMATION CLASSIFICATION SCHEME</b>	(Public, Open, Confidential, Confidential & Sensitive and Secret)		

REVISION HISTORY			
VER.	DATE	REV.	REVISION
X	DD/MM/YYYY	Z	(DRAFT)
X	DD/MM/YYYY	Z	(FEEDBACK FORMS INCLUDED)
X	DD/MM/YYYY	Z	(MODIFIED FEEDBACK FORMS)
X	DD/MM/YYYY	Z	(REFORMATTED FEEDBACK FORM)

ARCHITECT		Naail
<b>STRUCTURAL ENG.</b>		-
<b>MECHANICAL ENG.</b>		George
<b>ELECTRICAL ENG.</b>		-
<b>SCALE</b>		AS GIVEN

SHEET CONTENT	

SHEET NO.  
**A02**



LEGEND:

- S ADDRESSABLE SMOKE DETECTOR
- H ADDRESSABLE HEAT DETECTOR
- MCP ADDRESSABLE MANUAL CALL POINT
- B ADDRESSABLE SOUNDER BEACON
- FACP FIRE ALARM CONTROL PANEL 2-LOOPS WITH 24-HOUR BATTERY BACK-UP
- EL EMERGENCY LIGHT 8 WATTS
- EXIT EXIT SIGN 8 WATTS
- EXIT SAME AS THE ABOVE BUT DIRECTIONAL

FIRST FLOOR FIRE DETECTION & ALARM LAYOUT

SCALE 1:200



HDC OFFICE - FIRE DETECTION / ALARM SYSTEM  
HULHUMALE'

PLANNING AND DEVELOPMENT DEPARTMENT  
THIRD FLOOR, HDC BUILDING HULHUMALE'  
REPUBLIC OF MALDIVES  
TEL. +(960)3353535, FAX +(960)3358892  
EMAIL : planning@hdc.com.mv

The drawings, concept and design contained are the properties of HDC. Use of any kind or copy of whole or part of this drawing, concept or design or use on other projects or sites other than that specified on this drawing is strictly prohibited.

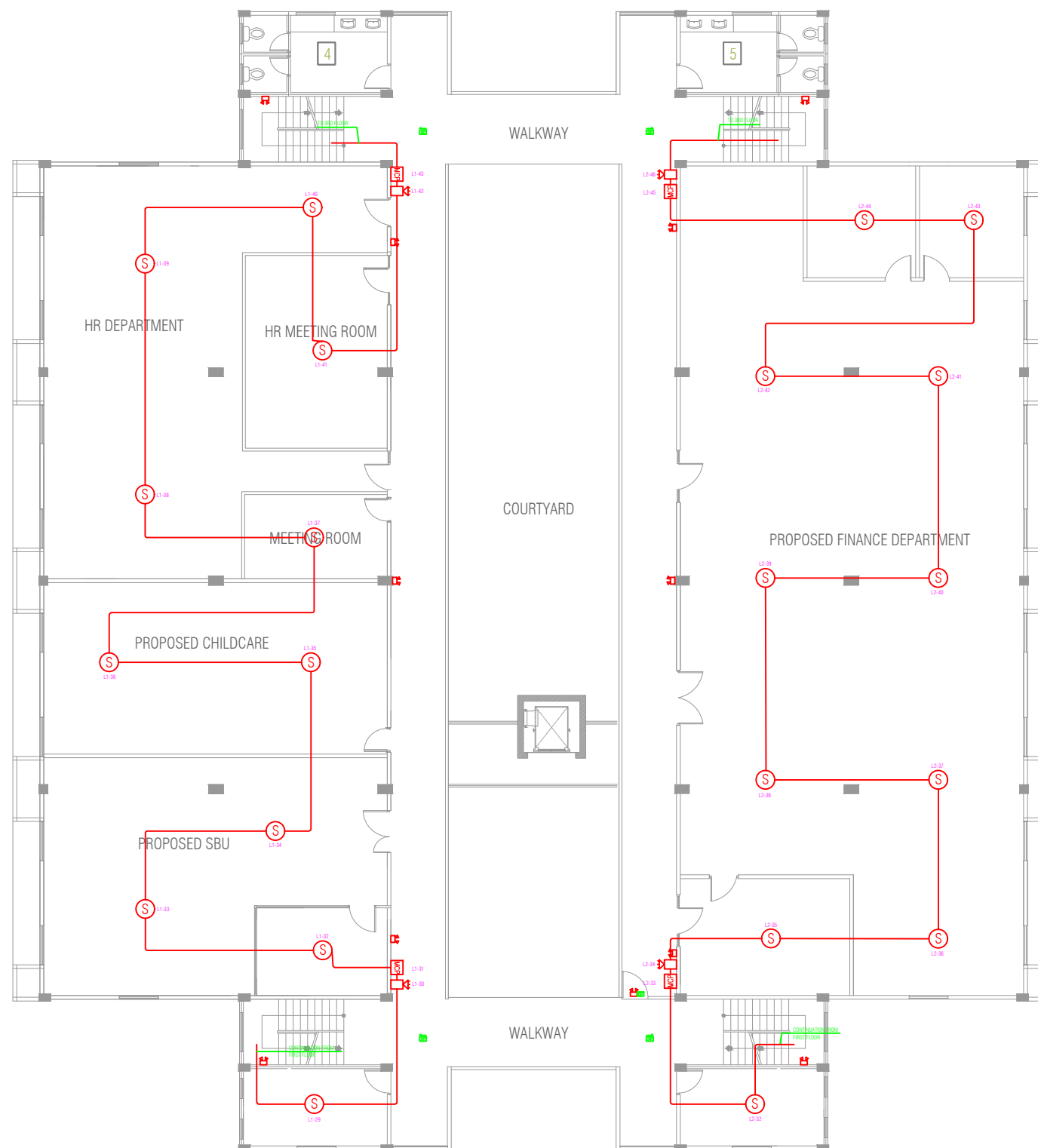
DOCUMENT ID	XXXXX-SSSS-YYYY-(NUMBER)	VERSION	2
DOCUMENT NAME	HDC OFFICE FIRE DRAWING	REVISION	-
AUTHOR	MOHAMED NAIL	CREATED DATE	08/10/2023
LAST UPDATED BY	MOHAMED NAIL	LAST UPDATED DATE	03/14/2023
REVIEWED BY	GEORGE	REVIEWED DATE	03/14/2023
APPROVED BY	MOHAMED YAMIN	APPROVED DATE	08/10/2023
INFORMATION CLASSIFICATION SCHEME	(Public, Open, Confidential, Confidential & Sensitive and Secret)		

REVISION HISTORY			
VER.	DATE	REV.	REVISION
X	DD/MM/YYYY	Z	(DRAFT)
X	DD/MM/YYYY	Z	(FEEDBACK FORMS INCLUDED)
X	DD/MM/YYYY	Z	(MODIFIED FEEDBACK FORMS)
X	DD/MM/YYYY	Z	(REFORMATTED FEEDBACK FORM)

ARCHITECT	Naail
STRUCTURAL ENG.	-
MECHANICAL ENG.	George
ELECTRICAL ENG.	-
SCALE	AS GIVEN

SHEET CONTENT

SHEET NO.  
**A03**



LEGEND:

- S ADDRESSABLE SMOKE DETECTOR
- H ADDRESSABLE HEAT DETECTOR
- MCP ADDRESSABLE MANUAL CALL POINT
- SB ADDRESSABLE SOUNDER BEACON
- FACP FIRE ALARM CONTROL PANEL 2-LOOPS WITH 24-HOUR BATTERY BACK-UP
- EL EMERGENCY LIGHT 8 WATTS
- EXIT EXIT SIGN 8 WATTS
- EXIT SAME AS THE ABOVE BUT DIRECTIONAL

SECOND FLOOR FIRE DETECTION & ALARM LAYOUT

SCALE 1:200



HDC OFFICE - FIRE DETECTION / ALARM SYSTEM  
HULHUMALE'

PLANNING AND DEVELOPMENT DEPARTMENT  
THIRD FLOOR, HDC BUILDING HULHUMALE'  
REPUBLIC OF MALDIVES  
TEL. +(960)3353535, FAX +(960)3358892  
EMAIL : planning@hdc.com.mv

The drawings, concept and design contained are the properties of HDC. Use of any kind or copy of whole or part of this drawing, concept or design or use on other projects or sites other than that specified on this drawing is strictly prohibited.

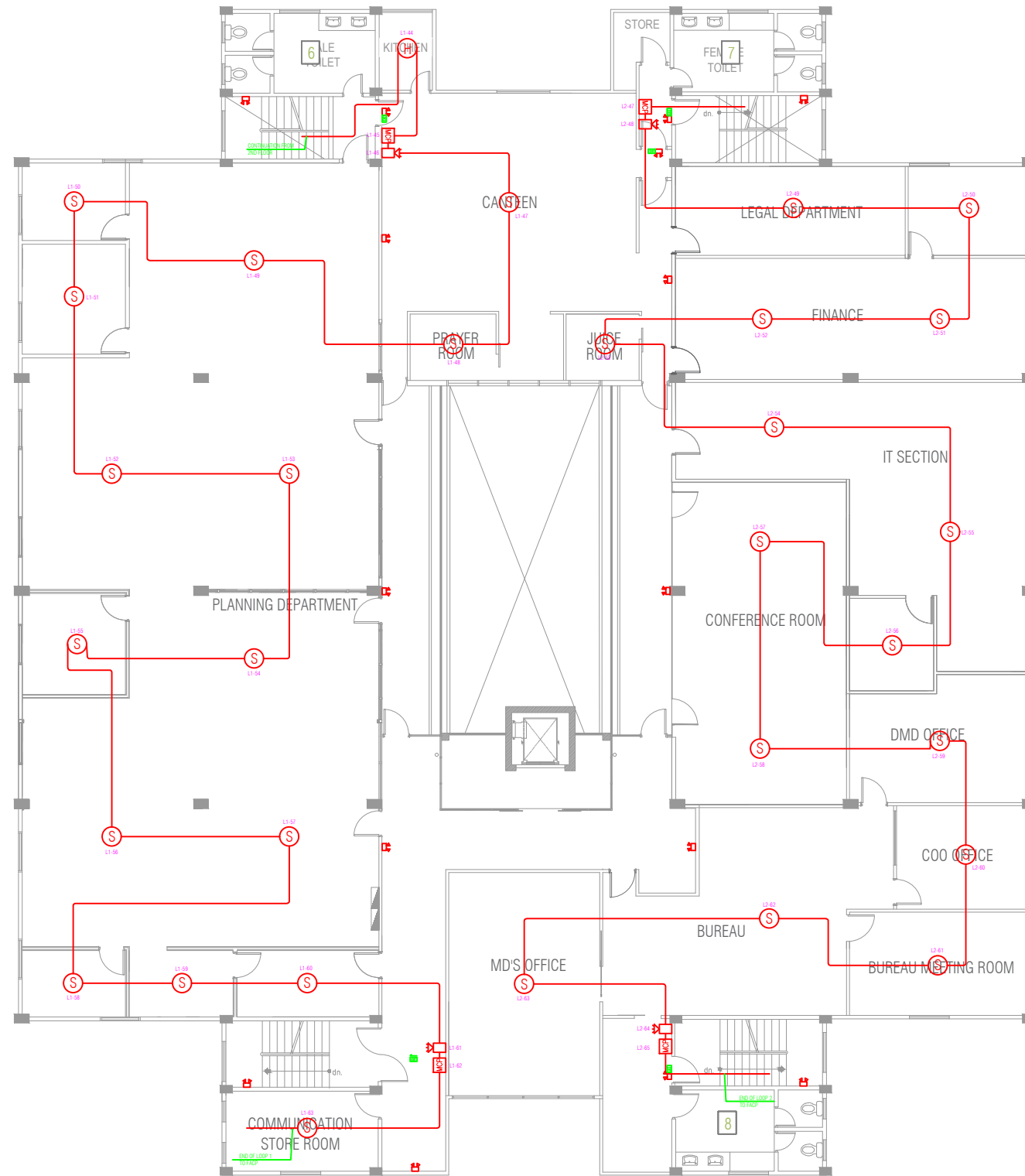
DOCUMENT ID	XXXXX-SSSS-YYYY-(NUMBER)	VERSION	2
DOCUMENT NAME	HDC OFFICE FIRE DRAWING	REVISION	-
AUTHOR	MOHAMED NAIL	CREATED DATE	08/10/2023
LAST UPDATED BY	MOHAMED NAIL	LAST UPDATED DATE	03/14/2023
REVIEWED BY	GEORGE	REVIEWED DATE	03/14/2023
APPROVED BY	MOHAMED YAMIN	APPROVED DATE	08/10/2023
INFORMATION CLASSIFICATION SCHEME	(Public, Open, Confidential, Confidential & Sensitive and Secret)		

REVISION HISTORY			
VER.	DATE	REV.	REVISION
X	DD/MM/YYYY	Z	(DRAFT)
X	DD/MM/YYYY	Z	(FEEDBACK FORMS INCLUDED)
X	DD/MM/YYYY	Z	(MODIFIED FEEDBACK FORMS)
X	DD/MM/YYYY	Z	(REFORMATTED FEEDBACK FORM)

ARCHITECT	Naail
STRUCTURAL ENG.	-
MECHANICAL ENG.	George
ELECTRICAL ENG.	-
SCALE	AS GIVEN

SHEET CONTENT

SHEET NO.  
**A04**



LEGEND:

- ADDRESSABLE SMOKE DETECTOR
- ADDRESSABLE HEAT DETECTOR
- ADDRESSABLE MANUAL CALL POINT
- ADDRESSABLE SOUNDER BEACON
- FIRE ALARM CONTROL PANEL 2-LOOPS WITH 24-HOUR BATTERY BACK-UP
- EMERGENCY LIGHT 8 WATTS
- EXIT SIGN 8 WATTS
- SAME AS THE ABOVE BUT DIRECTIONAL

THIRD FLOOR FIRE DETECTION & ALARM LAYOUT

SCALE 1:200



HDC OFFICE - FIRE DETECTION / ALARM SYSTEM  
HULHUMALE'

PLANNING AND DEVELOPMENT DEPARTMENT  
THIRD FLOOR, HDC BUILDING HULHUMALE'  
REPUBLIC OF MALDIVES  
TEL. +(960)3353535, FAX +(960)3358892  
EMAIL : planning@hdc.com.mv

The drawings, concept and design contained are the properties of HDC. Use of any kind or copy of whole or part of this drawing, concept or design or use on other projects or sites other than that specified on this drawing is strictly prohibited.

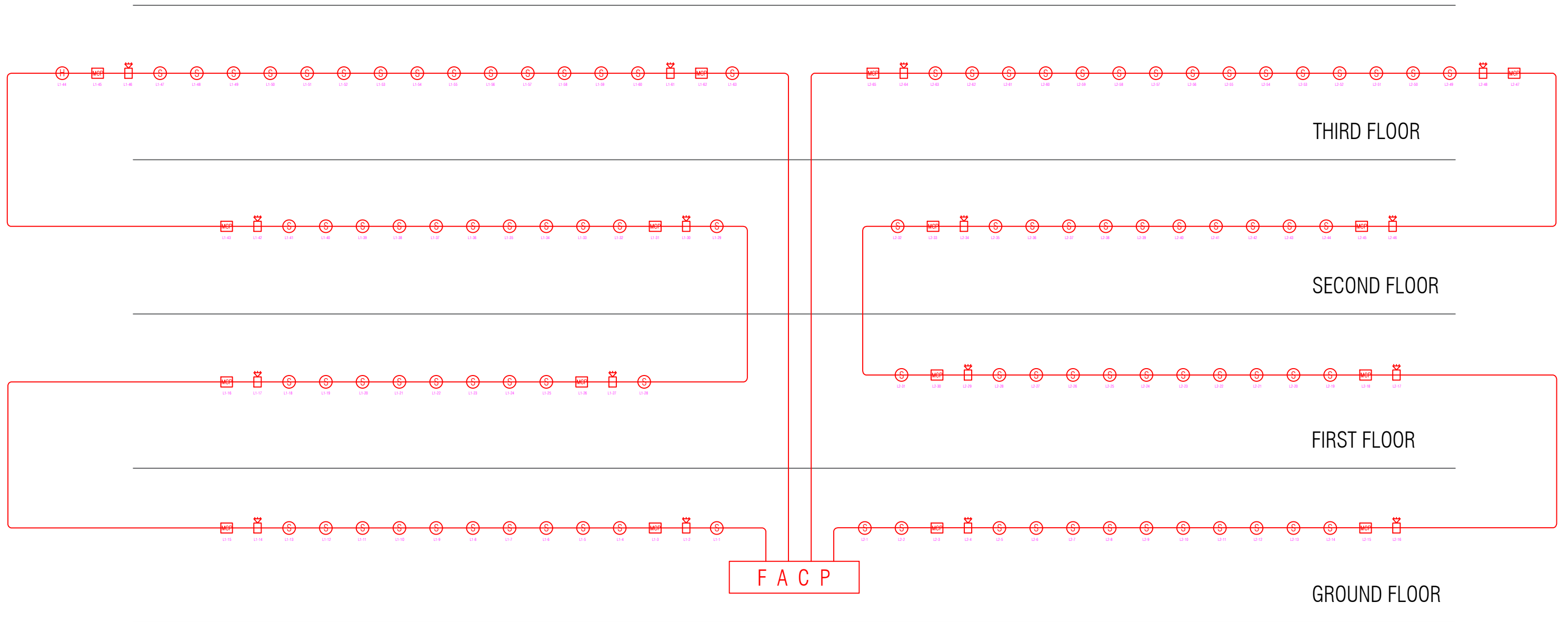
DOCUMENT ID	XXXXX-SSSS-YYYY-(NUMBER)	VERSION	2
DOCUMENT NAME	HDC OFFICE FIRE DRAWING	REVISION	-
AUTHOR	MOHAMED NAIL	CREATED DATE	08/10/2023
LAST UPDATED BY	MOHAMED NAIL	LAST UPDATED DATE	03/14/2023
REVIEWED BY	GEORGE	REVIEWED DATE	03/14/2023
APPROVED BY	MOHAMED YAMIN	APPROVED DATE	08/10/2023
INFORMATION CLASSIFICATION SCHEME	(Public, Open, Confidential, Confidential & Sensitive and Secret)		

REVISION HISTORY			
VER.	DATE	REV.	REVISION
X	DD/MM/YYYY	Z	(DRAFT)
X	DD/MM/YYYY	Z	(FEEDBACK FORMS INCLUDED)
X	DD/MM/YYYY	Z	(MODIFIED FEEDBACK FORMS)
X	DD/MM/YYYY	Z	(REFORMATTED FEEDBACK FORM)

ARCHITECT	Naail
STRUCTURAL ENG.	-
MECHANICAL ENG.	George
ELECTRICAL ENG.	-
SCALE	AS GIVEN

SHEET CONTENT

SHEET NO.  
**A05**



### RISER DIAGRAM

SCALE 1:200



PLANNING AND DEVELOPMENT DEPARTMENT  
 THIRD FLOOR, HDC BUILDING HULHUMALE  
 REPUBLIC OF MALDIVES  
 TEL. +(960)3353535, FAX +(960)3358892  
 EMAIL : planning@hdc.com.mv

### HDC OFFICE - FIRE DETECTION / ALARM SYSTEM

HULHUMALE'

The drawings, concept and design contained are the properties of HDC. Use of any kind or copy of whole or part of this drawing, concept or design or use on other projects or sites other than that specified on this drawing is strictly prohibited.

<b>DOCUMENT ID</b>	XXXXX-SSSS-YYYY-(NUMBER)	<b>VERSION</b>	2
<b>DOCUMENT NAME</b>	HDC OFFICE FIRE DRAWING	<b>REVISION</b>	-
<b>AUTHOR</b>	MOHAMED NAIL	<b>CREATED DATE</b>	08/10/2023
<b>LAST UPDATED BY</b>	MOHAMED NAIL	<b>LAST UPDATED DATE</b>	03/14/2023
<b>REVIEWED BY</b>	GEORGE	<b>REVIEWED DATE</b>	03/14/2023
<b>APPROVED BY</b>	MOHAMED YAMIN	<b>APPROVED DATE</b>	08/10/2023
<b>INFORMATION CLASSIFICATION SCHEME</b>	(Public, Open, Confidential, Confidential & Sensitive and Secret)		

REVISION HISTORY			
VER.	DATE	REV.	REVISION
X	DD/MM/YYYY	Z	(DRAFT)
X	DD/MM/YYYY	Z	(FEEDBACK FORMS INCLUDED)
X	DD/MM/YYYY	Z	(MODIFIED FEEDBACK FORMS)
X	DD/MM/YYYY	Z	(REFORMATTED FEEDBACK FORM)

<b>ARCHITECT</b>	Naail
<b>STRUCTURAL ENG.</b>	-
<b>MECHANICAL ENG.</b>	George
<b>ELECTRICAL ENG.</b>	-
<b>SCALE</b>	AS GIVEN

SHEET CONTENT

SHEET NO.  
A06