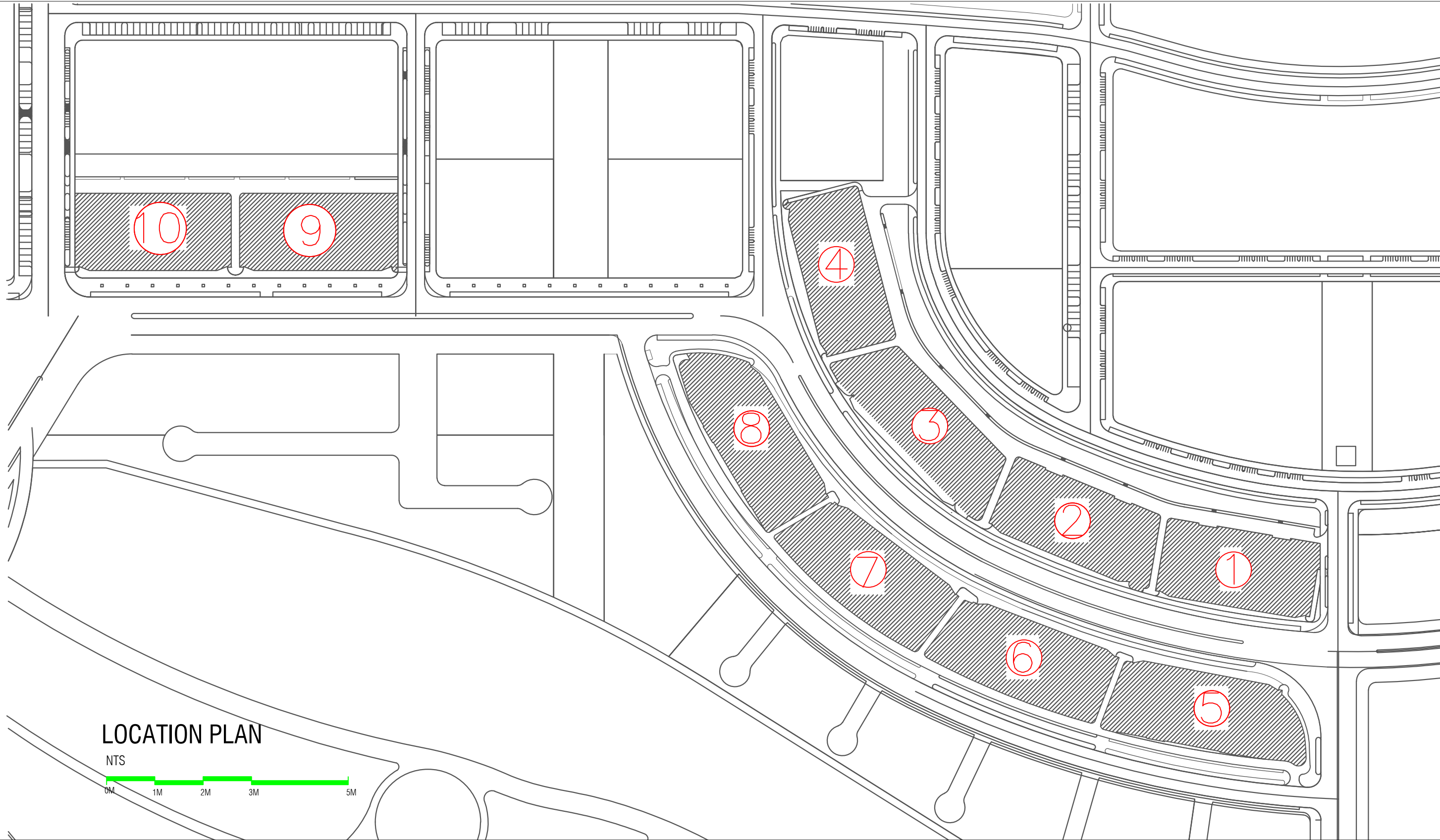


VINARES SEWER MAIN CONNECTION

PROVISION

VINARES COMMERCIAL
ARCHITECTURAL / SERVICES DRAWING
05th MARCH 2024





**HOUSING
DEVELOPMENT
CORPORATION**

PLANNING AND DEVELOPMENT DEPARTMENT
THIRD FLOOR, HDC BUILDING HULHUMALE'
REPUBLIC OF MALDIVES
TEL. +(960)3353535, FAX +(960)3358892
EMAIL : planning@hdc.com.mv

**VINARES COMMERCIAL
SEWER PROVISION
HULHUMALE'**

The drawings, concept and design contained are the properties of HDC. Use of any kind or copy of whole or part of this drawing, concept or design or use on other projects or sites other than that specified on this drawing is strictly prohibited.

DOCUMENT ID	XXXX-SSSS-YYYY-(NUMBER)	VERSION	1
DOCUMENT NAME	VINARES COMMERCIAL MAIN CONNECTION DETAILS	REVISION	-
AUTHOR	MOHAMED NAIL	CREATED DATE	03/05/2023
LAST UPDATED BY	MOHAMED NAIL	LAST UPDATED DATE	03/05/2023
REVIEWED BY	GEORGE	REVIEWED DATE	03/05/2023
APPROVED BY	MOHAMED YAMIN	APPROVED DATE	03/05/2023
INFORMATION CLASSIFICATION SCHEME	(Public, Open, Confidential, Confidential & Sensitive and Secret)		

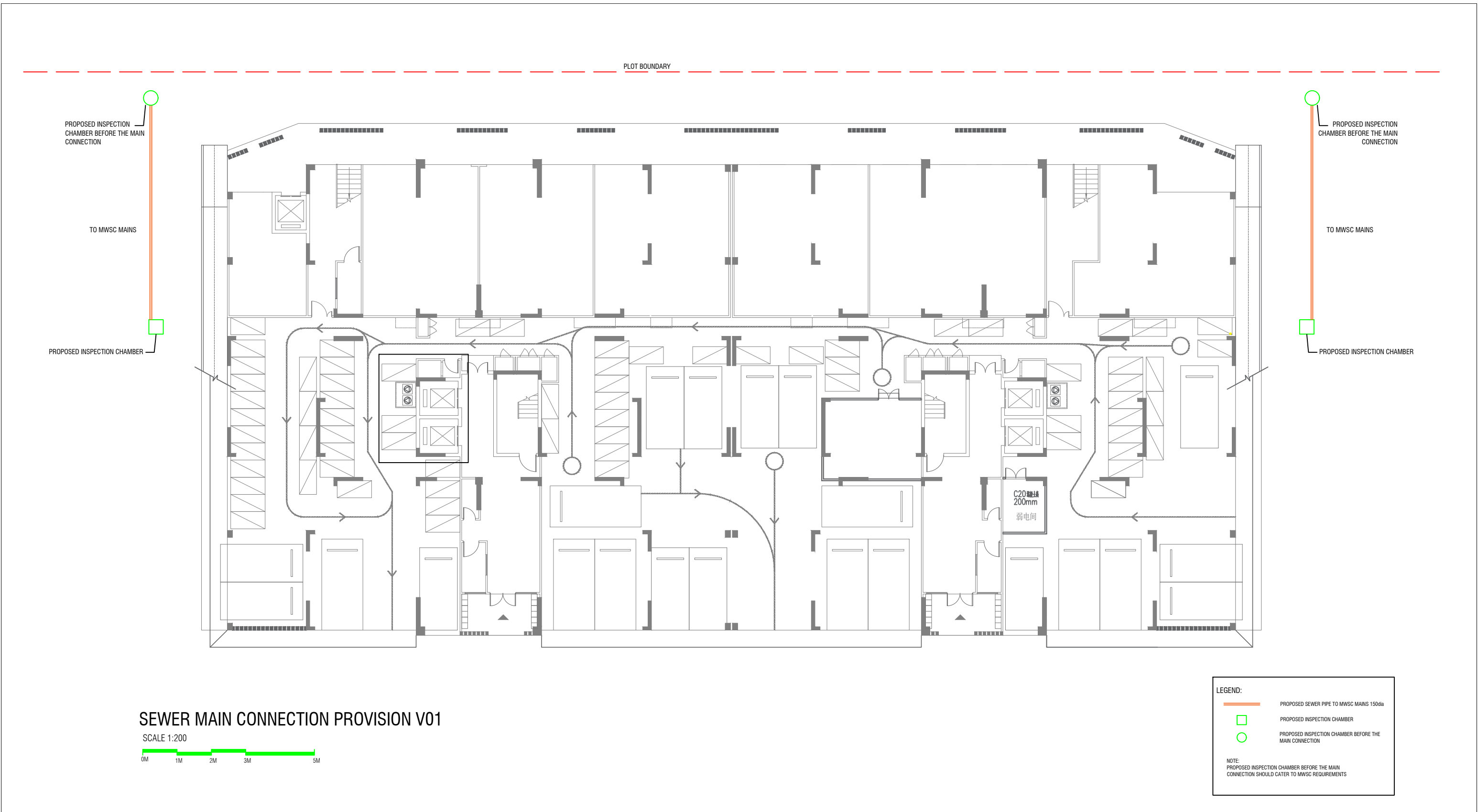
REVISION HISTORY			
VER.	DATE	REV.	REVISION
X	DD/MM/YYYY	Z	(DRAFT)
X	DD/MM/YYYY	Z	(FEEDBACK FORMS INCLUDED)
X	DD/MM/YYYY	Z	(MODIFIED FEEDBACK FORMS)
X	DD/MM/YYYY	Z	(REFORMATTED FEEDBACK FORM)

ARCHITECT	NAIL
STRUCTURAL ENG.	YAMIN
MECHANICAL ENG.	GEORGE
ELECTRICAL ENG.	NAME
SCALE	AS GIVEN

SHEET CONTENT

SHEET NO.

A01



PLANNING AND DEVELOPMENT DEPARTMENT
 THIRD FLOOR, HDC BUILDING HULHUMALE'
 REPUBLIC OF MALDIVES
 TEL. +(960)3353535, FAX +(960)3358892
 EMAIL : planning@hdc.com.mv

VINARES COMMERCIAL
 SEWER PROVISION
 HULHUMALE'

The drawings, concept and design contained are the properties of HDC. Use of any kind or copy of whole or part of this drawing, concept or design or use on other projects or sites other than that specified on this drawing is strictly prohibited.

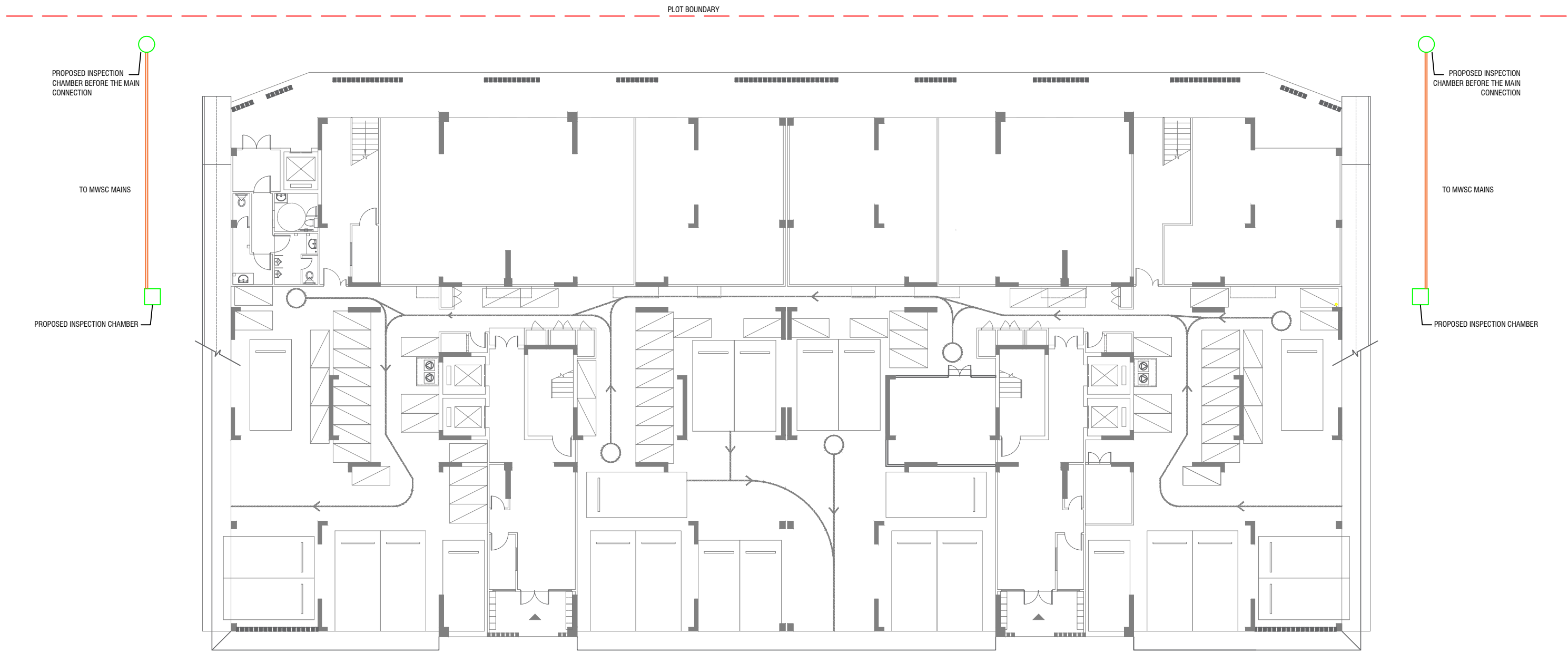
DOCUMENT ID	XXXX-SSSS-YYYY-(NUMBER)	VERSION	1
DOCUMENT NAME	VINARES COMMERCIAL MAIN CONNECTION DETAILS	REVISION	-
AUTHOR	MOHAMED NAIL	CREATED DATE	03/05/2023
LAST UPDATED BY	MOHAMED NAIL	LAST UPDATED DATE	03/05/2023
REVIEWED BY	GEORGE	REVIEWED DATE	03/05/2023
APPROVED BY	MOHAMED YAMIN	APPROVED DATE	03/05/2023
INFORMATION CLASSIFICATION SCHEME	(Public, Open, Confidential, Confidential & Sensitive and Secret)		

REVISION HISTORY			
VER.	DATE	REV.	REVISION
X	DD/MM/YYYY	Z	(DRAFT)
X	DD/MM/YYYY	Z	(FEEDBACK FORMS INCLUDED)
X	DD/MM/YYYY	Z	(MODIFIED FEEDBACK FORMS)
X	DD/MM/YYYY	Z	(REFORMATTED FEEDBACK FORM)

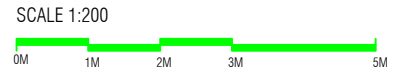
ARCHITECT	NAIL
STRUCTURAL ENG.	YAMIN
MECHANICAL ENG.	GEORGE
ELECTRICAL ENG.	NAME
SCALE	AS GIVEN

SHEET CONTENT

SHEET NO.
 A02



SEWER MAIN CONNECTION PROVISION V02



LEGEND:

- PROPOSED SEWER PIPE TO MWSC MAINS 150dia
- PROPOSED INSPECTION CHAMBER
- PROPOSED INSPECTION CHAMBER BEFORE THE MAIN CONNECTION

NOTE:
PROPOSED INSPECTION CHAMBER BEFORE THE MAIN CONNECTION SHOULD CATER TO MWSC REQUIREMENTS

HOUSING DEVELOPMENT CORPORATION

PLANNING AND DEVELOPMENT DEPARTMENT
THIRD FLOOR, HDC BUILDING HULHUMALE'
REPUBLIC OF MALDIVES
TEL. +(960)3353535, FAX +(960)3358892
EMAIL : planning@hdc.com.mv

VINARES COMMERCIAL SEWER PROVISION HULHUMALE'

The drawings, concept and design contained are the properties of HDC. Use of any kind or copy of whole or part of this drawing, concept or design or use on other projects or sites other than that specified on this drawing is strictly prohibited.

DOCUMENT ID	XXXX-SSSS-YYYY-(NUMBER)	VERSION	1
DOCUMENT NAME	VINARES COMMERCIAL MAIN CONNECTION DETAILS	REVISION	-
AUTHOR	MOHAMED NAIL	CREATED DATE	03/05/2023
LAST UPDATED BY	MOHAMED NAIL	LAST UPDATED DATE	03/05/2023
REVIEWED BY	GEORGE	REVIEWED DATE	03/05/2023
APPROVED BY	MOHAMED YAMIN	APPROVED DATE	03/05/2023
INFORMATION CLASSIFICATION SCHEME	(Public, Open, Confidential, Confidential & Sensitive and Secret)		

REVISION HISTORY			
VER.	DATE	REV.	REVISION
X	DD/MM/YYYY	Z	(DRAFT)
X	DD/MM/YYYY	Z	(FEEDBACK FORMS INCLUDED)
X	DD/MM/YYYY	Z	(MODIFIED FEEDBACK FORMS)
X	DD/MM/YYYY	Z	(REFORMATTED FEEDBACK FORM)

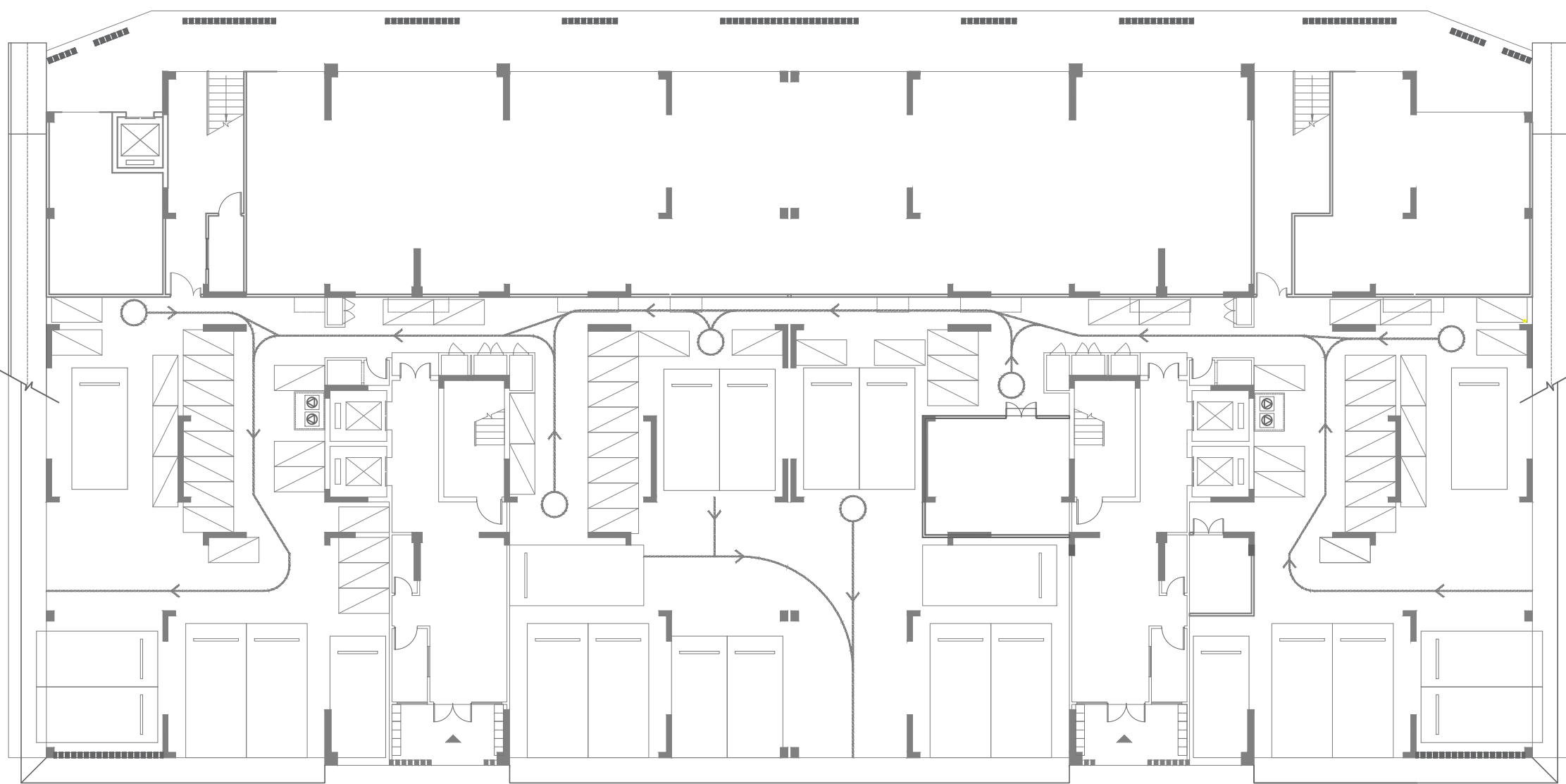
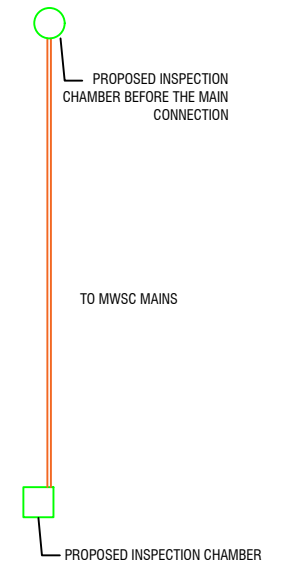
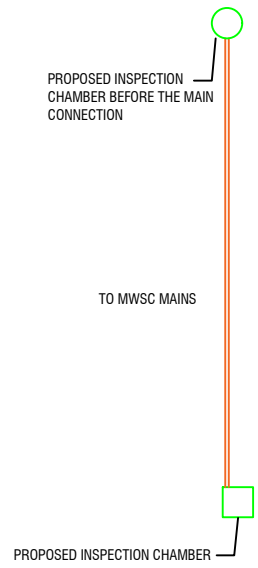
ARCHITECT	NAIL
STRUCTURAL ENG.	YAMIN
MECHANICAL ENG.	GEORGE
ELECTRICAL ENG.	NAME
SCALE	AS GIVEN

SHEET CONTENT	---

SHEET NO.

A03

PLOT BOUNDARY



SEWER MAIN CONNECTION PROVISION V03

SCALE 1:200



LEGEND:

- PROPOSED SEWER PIPE TO MWSC MAINS 150dia
- PROPOSED INSPECTION CHAMBER
- PROPOSED INSPECTION CHAMBER BEFORE THE MAIN CONNECTION

NOTE:
PROPOSED INSPECTION CHAMBER BEFORE THE MAIN CONNECTION SHOULD CATER TO MWSC REQUIREMENTS



PLANNING AND DEVELOPMENT DEPARTMENT
THIRD FLOOR, HDC BUILDING HULHUMALE'
REPUBLIC OF MALDIVES
TEL. +(960)3353535, FAX +(960)3358892
EMAIL : planning@hdc.com.mv

**VINARES COMMERCIAL
SEWER PROVISION
HULHUMALE'**

The drawings, concept and design contained are the properties of HDC. Use of any kind or copy of whole or part of this drawing, concept or design or use on other projects or sites other than that specified on this drawing is strictly prohibited.

DOCUMENT ID	XXXX-SSSS-YYYY-(NUMBER)	VERSION	1
DOCUMENT NAME	VINARES COMMERCIAL MAIN CONNECTION DETAILS	REVISION	-
AUTHOR	MOHAMED NAIL	CREATED DATE	03/05/2023
LAST UPDATED BY	MOHAMED NAIL	LAST UPDATED DATE	03/05/2023
REVIEWED BY	GEORGE	REVIEWED DATE	03/05/2023
APPROVED BY	MOHAMED YAMIN	APPROVED DATE	03/05/2023
INFORMATION CLASSIFICATION SCHEME	(Public, Open, Confidential, Confidential & Sensitive and Secret)		

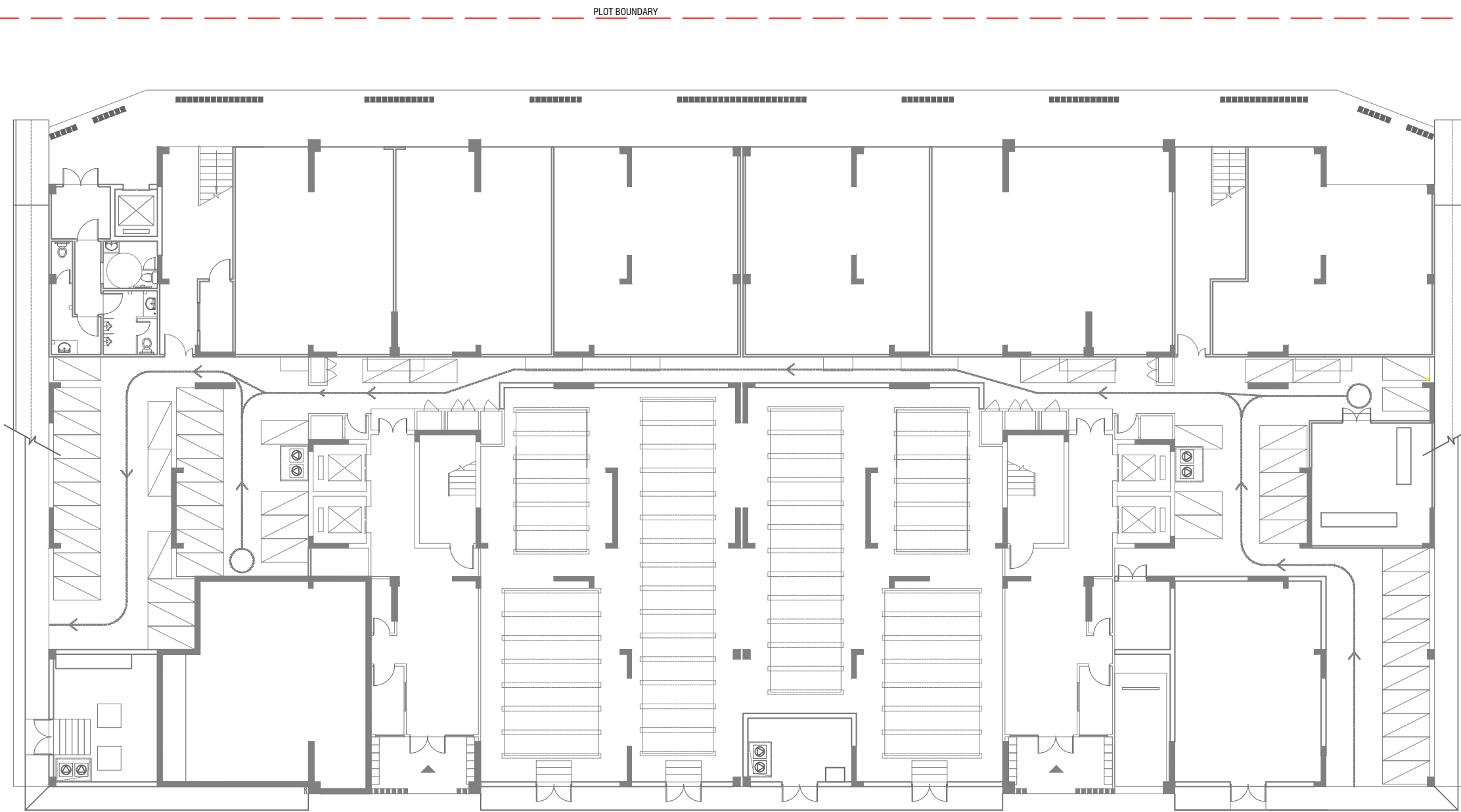
REVISION HISTORY			
VER.	DATE	REV.	REVISION
X	DD/MM/YYYY	Z	(DRAFT)
X	DD/MM/YYYY	Z	(FEEDBACK FORMS INCLUDED)
X	DD/MM/YYYY	Z	(MODIFIED FEEDBACK FORMS)
X	DD/MM/YYYY	Z	(REFORMATTED FEEDBACK FORM)

ARCHITECT	NAIL
STRUCTURAL ENG.	YAMIN
MECHANICAL ENG.	GEORGE
ELECTRICAL ENG.	NAME
SCALE	AS GIVEN

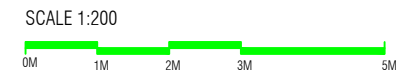
SHEET CONTENT	---

SHEET NO.

A04



SEWER MAIN CONNECTION PROVISION V04



LEGEND:

- PROPOSED SEWER PIPE TO MWSC MAINS 150dia
- PROPOSED INSPECTION CHAMBER
- PROPOSED INSPECTION CHAMBER BEFORE THE MAIN CONNECTION

NOTE:
PROPOSED INSPECTION CHAMBER BEFORE THE MAIN CONNECTION SHOULD CATER TO MWSC REQUIREMENTS



**VINARES COMMERCIAL
SEWER PROVISION
HULHUMALE'**

PLANNING AND DEVELOPMENT DEPARTMENT
THIRD FLOOR, HDC BUILDING HULHUMALE'
REPUBLIC OF MALDIVES
TEL. +(960)3353535, FAX +(960)3358892
EMAIL : planning@hdc.com.mv

The drawings, concept and design contained are the properties of HDC. Use of any kind or copy of whole or part of this drawing, concept or design or use on other projects or sites other than that specified on this drawing is strictly prohibited.

DOCUMENT ID	XXXX-SSSS-YYYY-(NUMBER)	VERSION	1
DOCUMENT NAME	VINARES COMMERCIAL MAIN CONNECTION DETAILS	REVISION	-
AUTHOR	MOHAMED NAIL	CREATED DATE	03/05/2023
LAST UPDATED BY	MOHAMED NAIL	LAST UPDATED DATE	03/05/2023
REVIEWED BY	GEORGE	REVIEWED DATE	03/05/2023
APPROVED BY	MOHAMED YAMIN	APPROVED DATE	03/05/2023
INFORMATION CLASSIFICATION SCHEME	(Public, Open, Confidential, Confidential & Sensitive and Secret)		

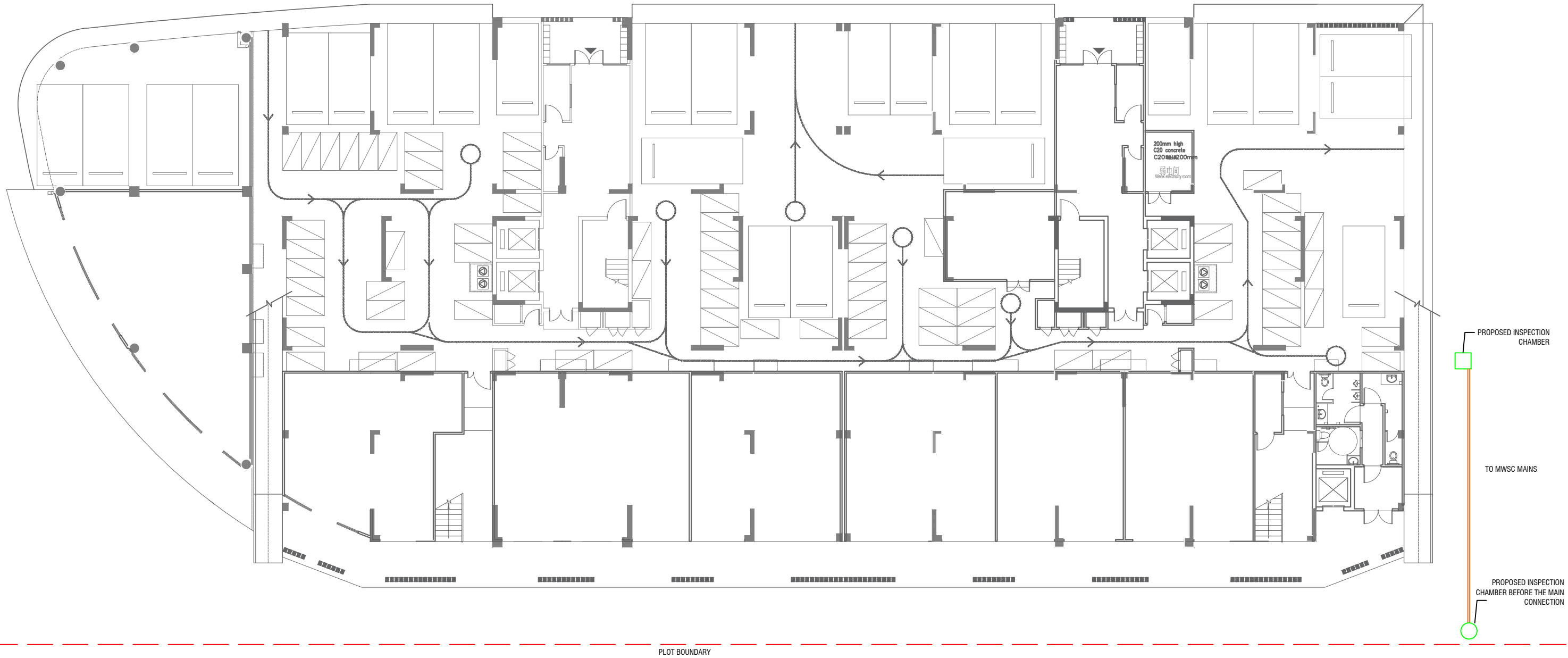
REVISION HISTORY			
VER.	DATE	REV.	REVISION
X	DD/MM/YYYY	Z	(DRAFT)
X	DD/MM/YYYY	Z	(FEEDBACK FORMS INCLUDED)
X	DD/MM/YYYY	Z	(MODIFIED FEEDBACK FORMS)
X	DD/MM/YYYY	Z	(REFORMATTED FEEDBACK FORM)

ARCHITECT	NAIL
STRUCTURAL ENG.	YAMIN
MECHANICAL ENG.	GEORGE
ELECTRICAL ENG.	NAME
SCALE	AS GIVEN

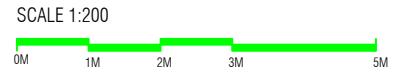
SHEET CONTENT	---

SHEET NO.

A05



SEWER MAIN CONNECTION PROVISION V05



LEGEND:

- PROPOSED SEWER PIPE TO MWSC MAINS 150dia
- PROPOSED INSPECTION CHAMBER
- PROPOSED INSPECTION CHAMBER BEFORE THE MAIN CONNECTION

NOTE:
PROPOSED INSPECTION CHAMBER BEFORE THE MAIN CONNECTION SHOULD CATER TO MWSC REQUIREMENTS



VINARES COMMERCIAL SEWER PROVISION HULHUMALE'

PLANNING AND DEVELOPMENT DEPARTMENT
THIRD FLOOR, HDC BUILDING HULHUMALE'
REPUBLIC OF MALDIVES
TEL. +(960)3353535, FAX +(960)3358892
EMAIL : planning@hdc.com.mv

The drawings, concept and design contained are the properties of HDC. Use of any kind or copy of whole or part of this drawing, concept or design or use on other projects or sites other than that specified on this drawing is strictly prohibited.

DOCUMENT ID	XXXX-SSSS-YYYY-(NUMBER)	VERSION	1
DOCUMENT NAME	VINARES COMMERCIAL MAIN CONNECTION DETAILS	REVISION	-
AUTHOR	MOHAMED NAIL	CREATED DATE	03/05/2023
LAST UPDATED BY	MOHAMED NAIL	LAST UPDATED DATE	03/05/2023
REVIEWED BY	GEORGE	REVIEWED DATE	03/05/2023
APPROVED BY	MOHAMED YAMIN	APPROVED DATE	03/05/2023
INFORMATION CLASSIFICATION SCHEME	(Public, Open, Confidential, Confidential & Sensitive and Secret)		

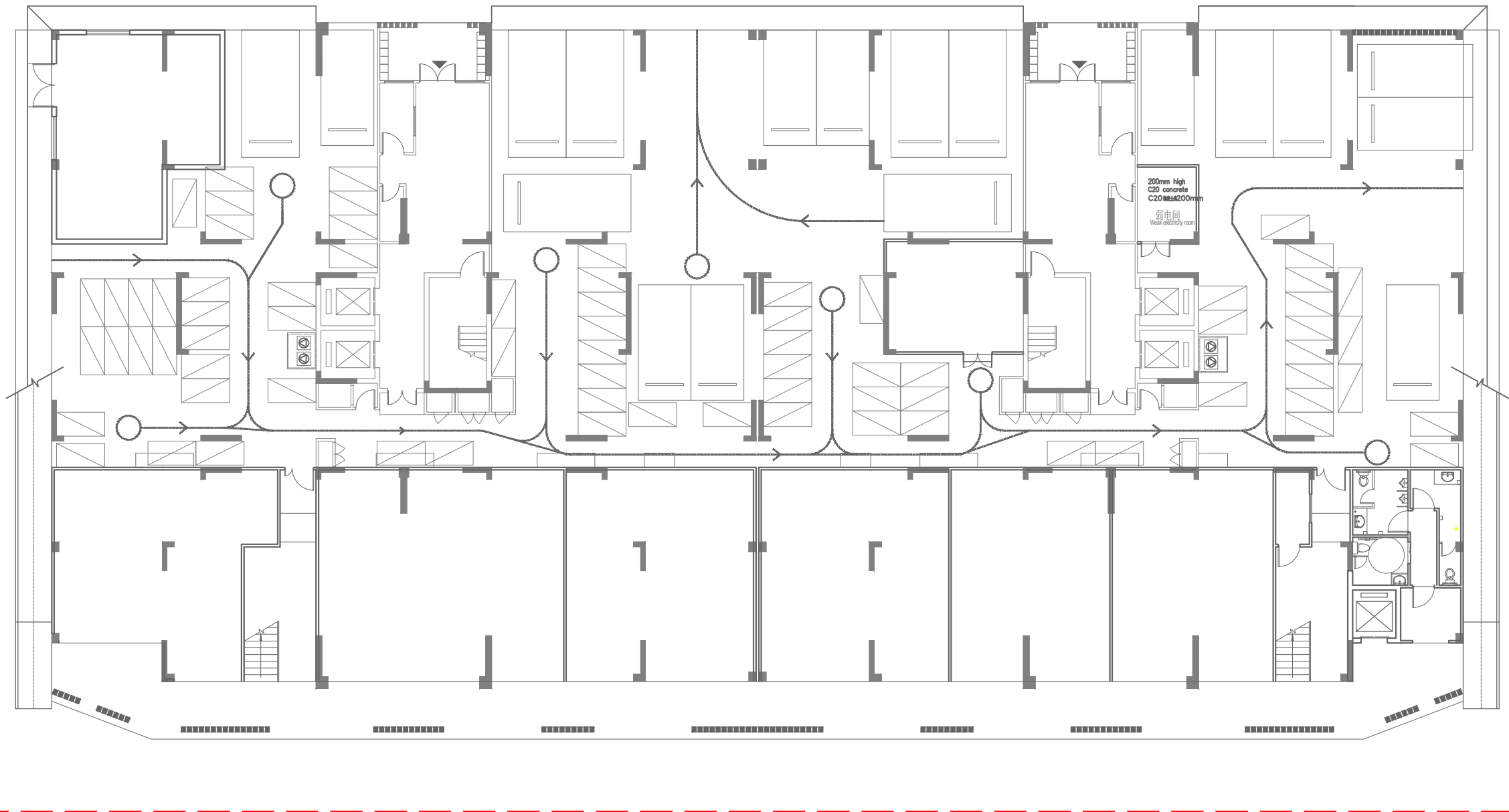
REVISION HISTORY			
VER.	DATE	REV.	REVISION
X	DD/MM/YYYY	Z	(DRAFT)
X	DD/MM/YYYY	Z	(FEEDBACK FORMS INCLUDED)
X	DD/MM/YYYY	Z	(MODIFIED FEEDBACK FORMS)
X	DD/MM/YYYY	Z	(REFORMATTED FEEDBACK FORM)

ARCHITECT	NAIL
STRUCTURAL ENG.	YAMIN
MECHANICAL ENG.	GEORGE
ELECTRICAL ENG.	NAME
SCALE	AS GIVEN

SHEET CONTENT

SHEET NO.

A06



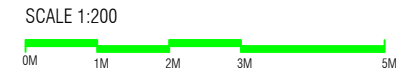
PLOT BOUNDARY

LEGEND:

- PROPOSED SEWER PIPE TO MWSC MAINS 150dia
- PROPOSED INSPECTION CHAMBER
- PROPOSED INSPECTION CHAMBER BEFORE THE MAIN CONNECTION

NOTE:
PROPOSED INSPECTION CHAMBER BEFORE THE MAIN CONNECTION SHOULD CATER TO MWSC REQUIREMENTS

SEWER MAIN CONNECTION PROVISION V06



VINARES COMMERCIAL SEWER PROVISION HULHUMALE'

PLANNING AND DEVELOPMENT DEPARTMENT
THIRD FLOOR, HDC BUILDING HULHUMALE'
REPUBLIC OF MALDIVES
TEL. +(960)3353535, FAX +(960)3358892
EMAIL : planning@hdc.com.mv

The drawings, concept and design contained are the properties of HDC. Use of any kind or copy of whole or part of this drawing, concept or design or use on other projects or sites other than that specified on this drawing is strictly prohibited.

DOCUMENT ID	XXXX-SSSS-YYYY-(NUMBER)	VERSION	1
DOCUMENT NAME	VINARES COMMERCIAL MAIN CONNECTION DETAILS	REVISION	-
AUTHOR	MOHAMED NAIL	CREATED DATE	03/05/2023
LAST UPDATED BY	MOHAMED NAIL	LAST UPDATED DATE	03/05/2023
REVIEWED BY	GEORGE	REVIEWED DATE	03/05/2023
APPROVED BY	MOHAMED YAMIN	APPROVED DATE	03/05/2023
INFORMATION CLASSIFICATION SCHEME	(Public, Open, Confidential, Confidential & Sensitive and Secret)		

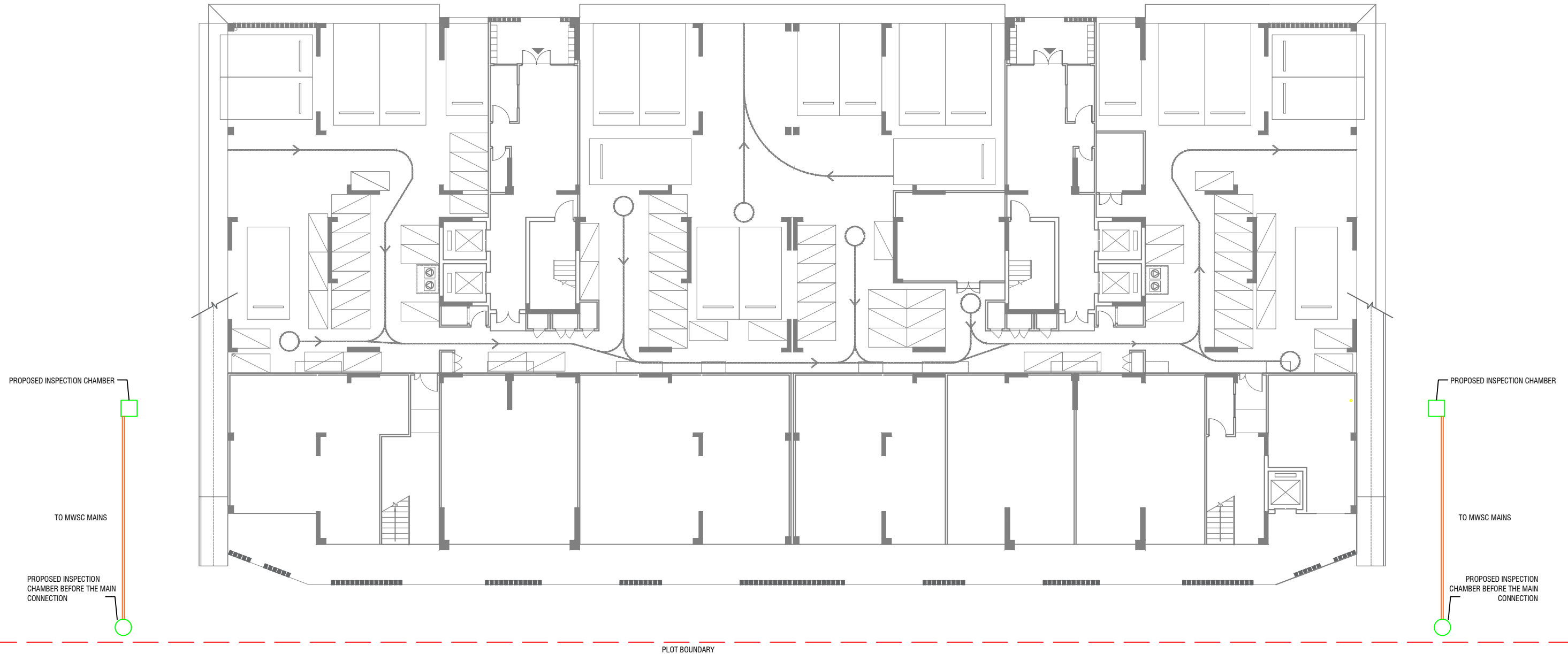
REVISION HISTORY			
VER.	DATE	REV.	REVISION
X	DD/MM/YYYY	Z	(DRAFT)
X	DD/MM/YYYY	Z	(FEEDBACK FORMS INCLUDED)
X	DD/MM/YYYY	Z	(MODIFIED FEEDBACK FORMS)
X	DD/MM/YYYY	Z	(REFORMATTED FEEDBACK FORM)

ARCHITECT	NAIL
STRUCTURAL ENG.	YAMIN
MECHANICAL ENG.	GEORGE
ELECTRICAL ENG.	NAME
SCALE	AS GIVEN

SHEET CONTENT	---

SHEET NO.

A07



SEWER MAIN CONNECTION PROVISION V07

SCALE 1:200



LEGEND:

- PROPOSED SEWER PIPE TO MWSC MAINS 150dia
- PROPOSED INSPECTION CHAMBER
- PROPOSED INSPECTION CHAMBER BEFORE THE MAIN CONNECTION

NOTE:
PROPOSED INSPECTION CHAMBER BEFORE THE MAIN CONNECTION SHOULD CATER TO MWSC REQUIREMENTS



PLANNING AND DEVELOPMENT DEPARTMENT
THIRD FLOOR, HDC BUILDING HULHUMALE'
REPUBLIC OF MALDIVES
TEL. +(960)3353535, FAX +(960)3358892
EMAIL : planning@hdc.com.mv

VINARES COMMERCIAL SEWER PROVISION HULHUMALE'

The drawings, concept and design contained are the properties of HDC. Use of any kind or copy of whole or part of this drawing, concept or design or use on other projects or sites other than that specified on this drawing is strictly prohibited.

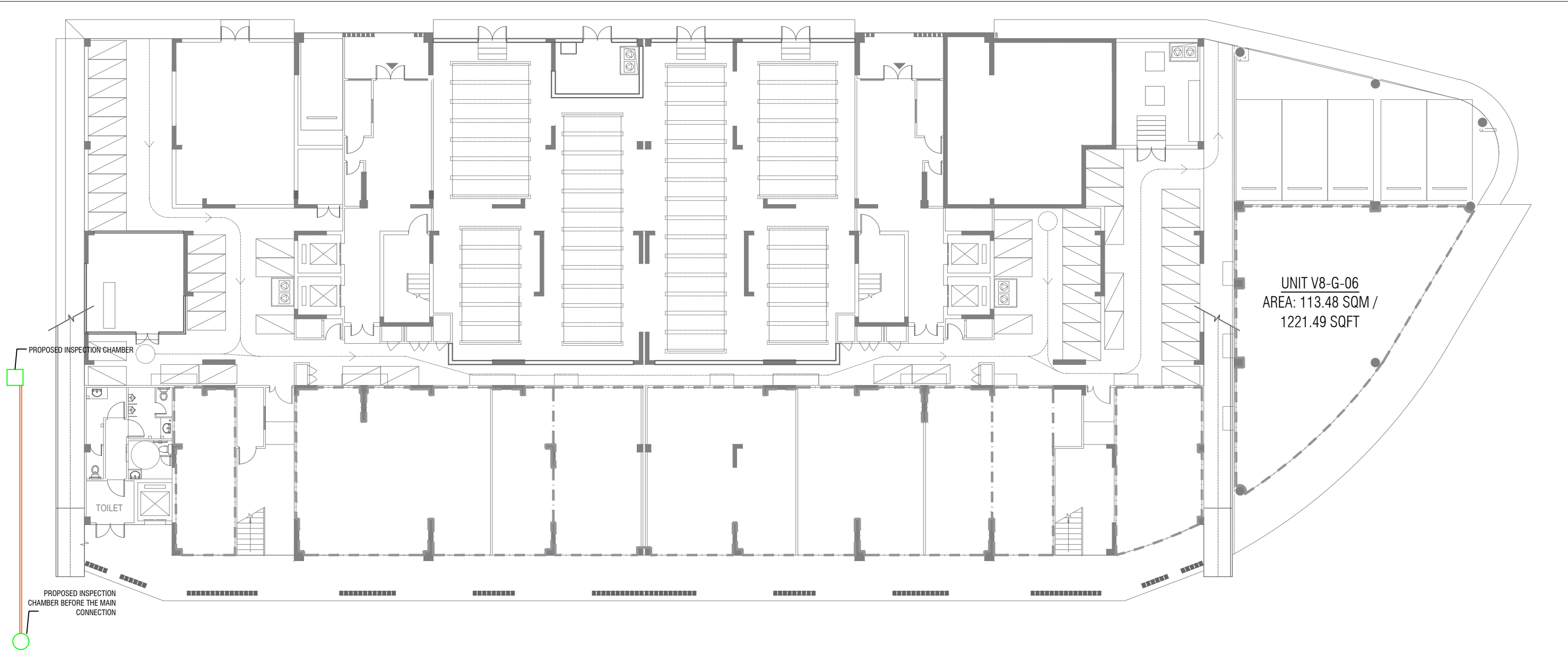
DOCUMENT ID	XXXX-SSSS-YYYY-(NUMBER)	VERSION	1
DOCUMENT NAME	VINARES COMMERCIAL MAIN CONNECTION DETAILS	REVISION	-
AUTHOR	MOHAMED NAIL	CREATED DATE	03/05/2023
LAST UPDATED BY	MOHAMED NAIL	LAST UPDATED DATE	03/05/2023
REVIEWED BY	GEORGE	REVIEWED DATE	03/05/2023
APPROVED BY	MOHAMED YAMIN	APPROVED DATE	03/05/2023
INFORMATION CLASSIFICATION SCHEME	(Public, Open, Confidential, Confidential & Sensitive and Secret)		

REVISION HISTORY			
VER.	DATE	REV.	REVISION
X	DD/MM/YYYY	Z	(DRAFT)
X	DD/MM/YYYY	Z	(FEEDBACK FORMS INCLUDED)
X	DD/MM/YYYY	Z	(MODIFIED FEEDBACK FORMS)
X	DD/MM/YYYY	Z	(REFORMATTED FEEDBACK FORM)

ARCHITECT	NAIL
STRUCTURAL ENG.	YAMIN
MECHANICAL ENG.	GEORGE
ELECTRICAL ENG.	NAME
SCALE	AS GIVEN

SHEET CONTENT	

SHEET NO.
A08



SEWER MAIN CONNECTION PROVISION V08

SCALE 1:200



LEGEND:

- PROPOSED SEWER PIPE TO MWSC MAINS 150dia
- PROPOSED INSPECTION CHAMBER
- PROPOSED INSPECTION CHAMBER BEFORE THE MAIN CONNECTION

NOTE:
PROPOSED INSPECTION CHAMBER BEFORE THE MAIN CONNECTION SHOULD CATER TO MWSC REQUIREMENTS



PLANNING AND DEVELOPMENT DEPARTMENT
THIRD FLOOR, HDC BUILDING HULHUMALE'
REPUBLIC OF MALDIVES
TEL. +(960)3353535, FAX +(960)3358892
EMAIL : planning@hdc.com.mv

**VINARES COMMERCIAL
SEWER PROVISION
HULHUMALE'**

The drawings, concept and design contained are the properties of HDC. Use of any kind or copy of whole or part of this drawing, concept or design or use on other projects or sites other than that specified on this drawing is strictly prohibited.

DOCUMENT ID	XXXX-SSSS-YYYY-(NUMBER)	VERSION	1
DOCUMENT NAME	VINARES COMMERCIAL MAIN CONNECTION DETAILS	REVISION	-
AUTHOR	MOHAMED NAIL	CREATED DATE	03/05/2023
LAST UPDATED BY	MOHAMED NAIL	LAST UPDATED DATE	03/05/2023
REVIEWED BY	GEORGE	REVIEWED DATE	03/05/2023
APPROVED BY	MOHAMED YAMIN	APPROVED DATE	03/05/2023
INFORMATION CLASSIFICATION SCHEME	(Public, Open, Confidential, Confidential & Sensitive and Secret)		

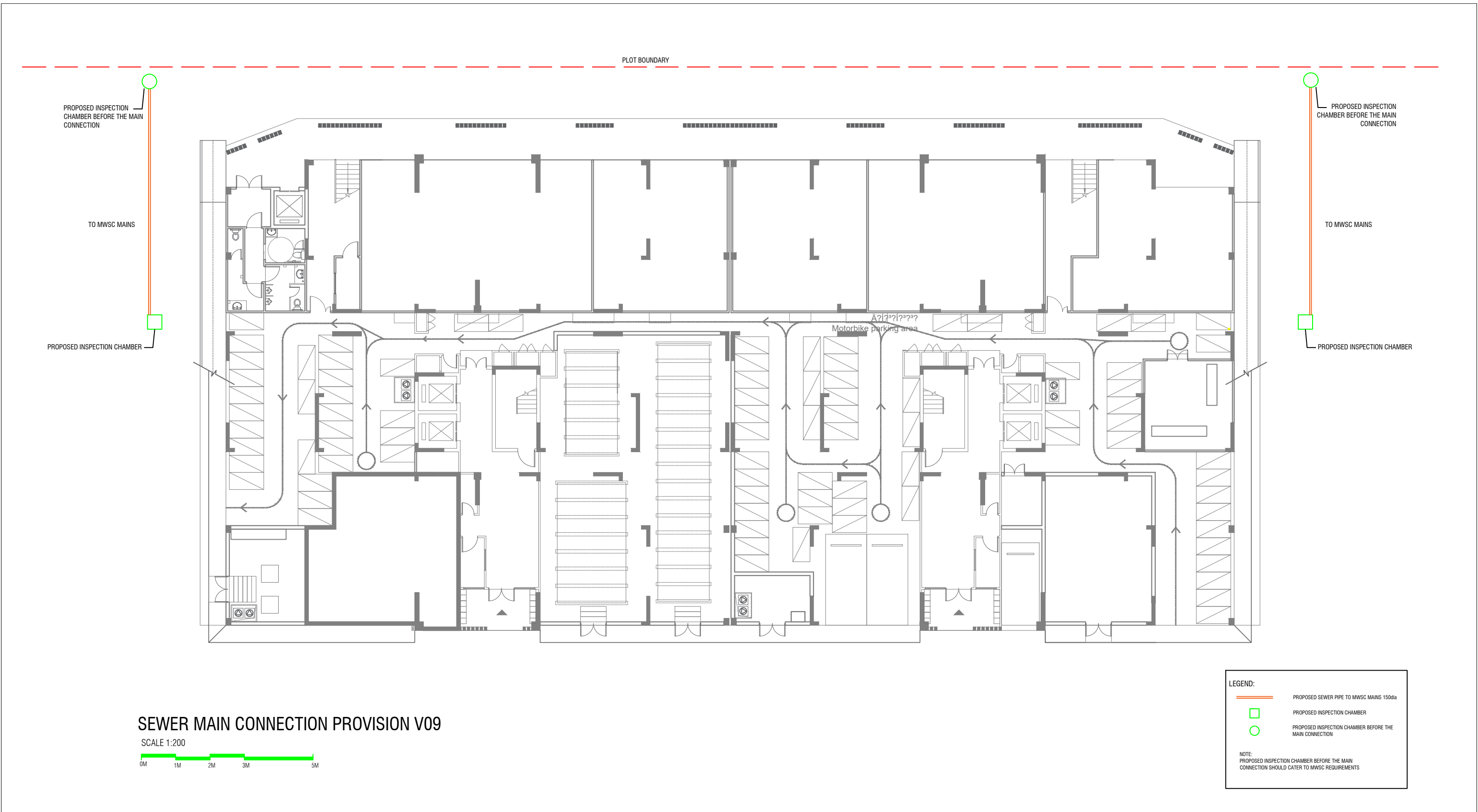
REVISION HISTORY			
VER.	DATE	REV.	REVISION
X	DD/MM/YYYY	Z	(DRAFT)
X	DD/MM/YYYY	Z	(FEEDBACK FORMS INCLUDED)
X	DD/MM/YYYY	Z	(MODIFIED FEEDBACK FORMS)
X	DD/MM/YYYY	Z	(REFORMATTED FEEDBACK FORM)

ARCHITECT	NAIL
STRUCTURAL ENG.	YAMIN
MECHANICAL ENG.	GEORGE
ELECTRICAL ENG.	NAME
SCALE	AS GIVEN

SHEET CONTENT

SHEET NO.

A09



SEWER MAIN CONNECTION PROVISION V09

SCALE 1:200



LEGEND:

- PROPOSED SEWER PIPE TO MWSC MAINS 150dia
- PROPOSED INSPECTION CHAMBER
- PROPOSED INSPECTION CHAMBER BEFORE THE MAIN CONNECTION

NOTE:
PROPOSED INSPECTION CHAMBER BEFORE THE MAIN CONNECTION SHOULD CATER TO MWSC REQUIREMENTS



PLANNING AND DEVELOPMENT DEPARTMENT
THIRD FLOOR, HDC BUILDING HULHUMALE'
REPUBLIC OF MALDIVES
TEL. +(960)3353535, FAX +(960)3358892
EMAIL : planning@hdc.com.mv

**VINARES COMMERCIAL
SEWER PROVISION
HULHUMALE'**

The drawings, concept and design contained are the properties of HDC. Use of any kind or copy of whole or part of this drawing, concept or design or use on other projects or sites other than that specified on this drawing is strictly prohibited.

DOCUMENT ID	XXXX-SSSS-YYYY-(NUMBER)	VERSION	1
DOCUMENT NAME	VINARES COMMERCIAL MAIN CONNECTION DETAILS	REVISION	-
AUTHOR	MOHAMED NAIL	CREATED DATE	03/05/2023
LAST UPDATED BY	MOHAMED NAIL	LAST UPDATED DATE	03/05/2023
REVIEWED BY	GEORGE	REVIEWED DATE	03/05/2023
APPROVED BY	MOHAMED YAMIN	APPROVED DATE	03/05/2023
INFORMATION CLASSIFICATION SCHEME	(Public, Open, Confidential, Confidential & Sensitive and Secret)		

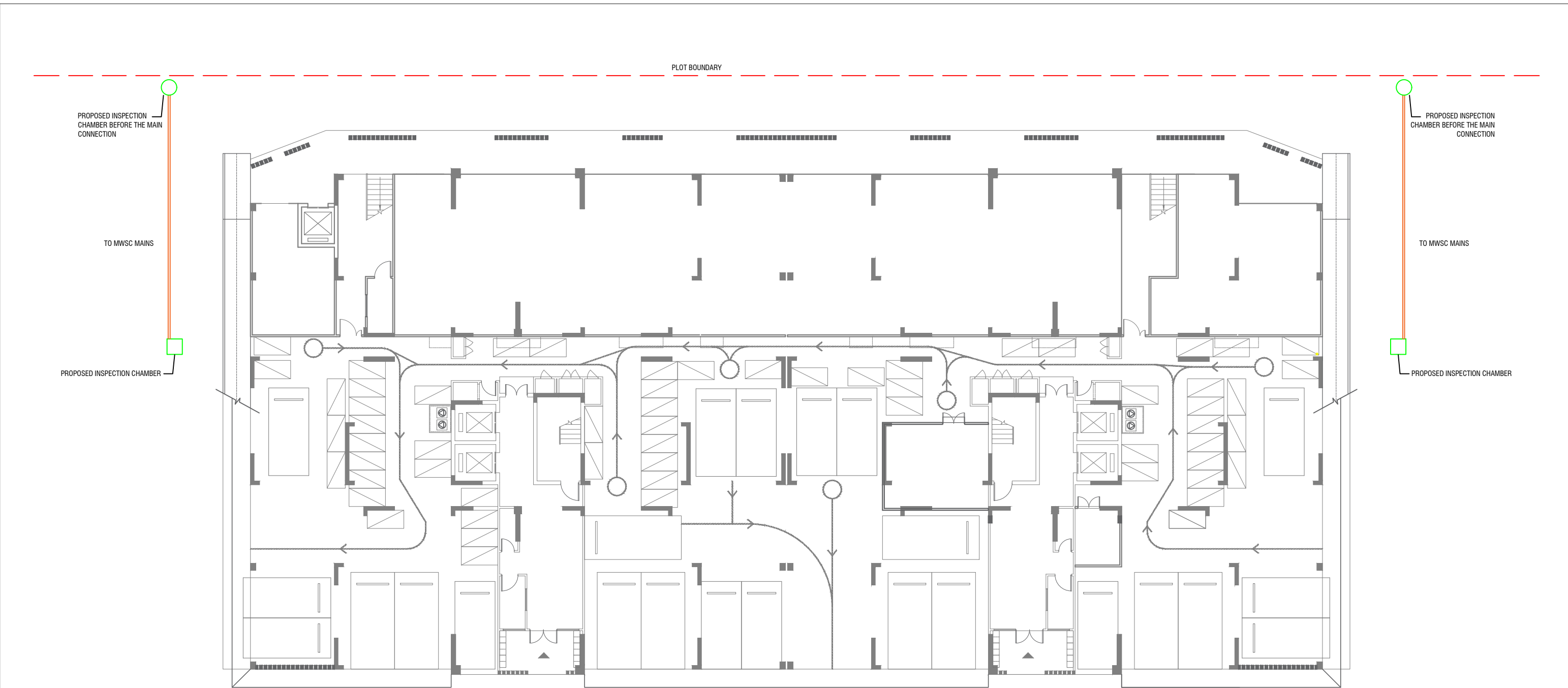
REVISION HISTORY			
VER.	DATE	REV.	REVISION
X	DD/MM/YYYY	Z	(DRAFT)
X	DD/MM/YYYY	Z	(FEEDBACK FORMS INCLUDED)
X	DD/MM/YYYY	Z	(MODIFIED FEEDBACK FORMS)
X	DD/MM/YYYY	Z	(REFORMATTED FEEDBACK FORM)

ARCHITECT	NAIL
STRUCTURAL ENG.	YAMIN
MECHANICAL ENG.	GEORGE
ELECTRICAL ENG.	NAME
SCALE	AS GIVEN

SHEET CONTENT	---

SHEET NO.

A10



SEWER MAIN CONNECTION PROVISION V10

SCALE 1:200



LEGEND:

- PROPOSED SEWER PIPE TO MWSC MAINS 150dia
- PROPOSED INSPECTION CHAMBER
- PROPOSED INSPECTION CHAMBER BEFORE THE MAIN CONNECTION

NOTE:
PROPOSED INSPECTION CHAMBER BEFORE THE MAIN CONNECTION SHOULD CATER TO MWSC REQUIREMENTS



**VINARES COMMERCIAL
SEWER PROVISION
HULHUMALE'**

PLANNING AND DEVELOPMENT DEPARTMENT
THIRD FLOOR, HDC BUILDING HULHUMALE'
REPUBLIC OF MALDIVES
TEL. +(960)3353535, FAX +(960)3358892
EMAIL : planning@hdc.com.mv

The drawings, concept and design contained are the properties of HDC. Use of any kind or copy of whole or part of this drawing, concept or design or use on other projects or sites other than that specified on this drawing is strictly prohibited.

DOCUMENT ID	XXXX-SSSS-YYYY-(NUMBER)	VERSION	1
DOCUMENT NAME	VINARES COMMERCIAL MAIN CONNECTION DETAILS	REVISION	-
AUTHOR	MOHAMED NAIL	CREATED DATE	03/05/2023
LAST UPDATED BY	MOHAMED NAIL	LAST UPDATED DATE	03/05/2023
REVIEWED BY	GEORGE	REVIEWED DATE	03/05/2023
APPROVED BY	MOHAMED YAMIN	APPROVED DATE	03/05/2023
INFORMATION CLASSIFICATION SCHEME	(Public, Open, Confidential, Confidential & Sensitive and Secret)		

REVISION HISTORY			
VER.	DATE	REV.	REVISION
X	DD/MM/YYYY	Z	(DRAFT)
X	DD/MM/YYYY	Z	(FEEDBACK FORMS INCLUDED)
X	DD/MM/YYYY	Z	(MODIFIED FEEDBACK FORMS)
X	DD/MM/YYYY	Z	(REFORMATTED FEEDBACK FORM)

ARCHITECT	NAIL
STRUCTURAL ENG.	YAMIN
MECHANICAL ENG.	GEORGE
ELECTRICAL ENG.	NAME
SCALE	AS GIVEN

SHEET CONTENT	---

SHEET NO.

A11