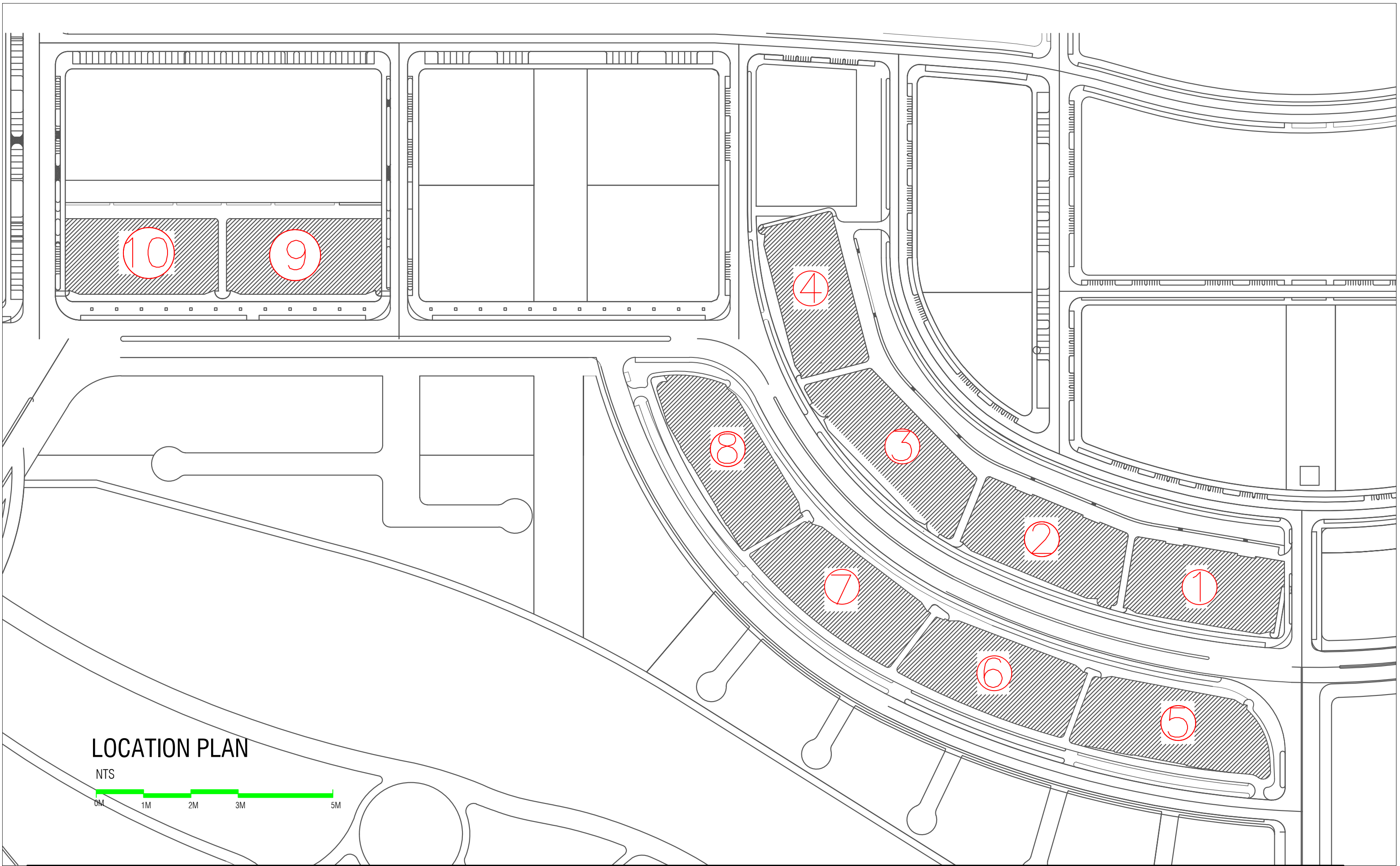


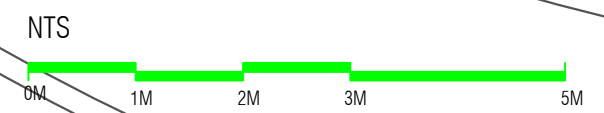
# VINARES UNDERGROUND SERVICES AS-BUILT

VINARES COMMERCIAL  
ARCHITECTURAL / SERVICES DRAWING  
03 MARCH 2024





### LOCATION PLAN



### VINARES COMMERCIAL SEWER PROVISION HULHUMALE'

PLANNING AND DEVELOPMENT DEPARTMENT  
THIRD FLOOR, HDC BUILDING HULHUMALE'  
REPUBLIC OF MALDIVES  
TEL. +(960)3353535, FAX +(960)3358892  
EMAIL : planning@hdc.com.mv

The drawings, concept and design contained are the properties of HDC. Use of any kind or copy of whole or part of this drawing, concept or design or use on other projects or sites other than that specified on this drawing is strictly prohibited.

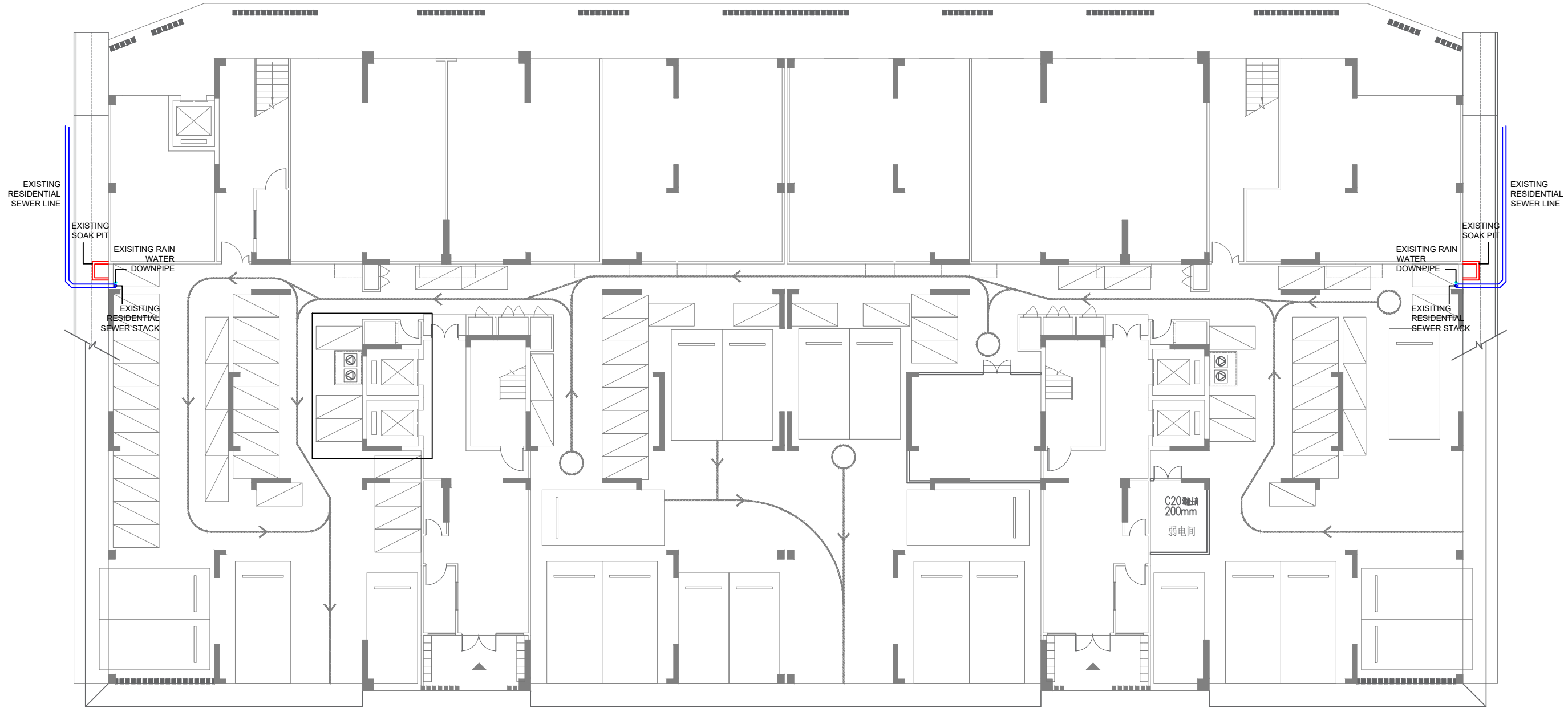
<b>DOCUMENT ID</b>	XXXX-SSSS-YYYY-(NUMBER)	<b>VERSION</b>	4
<b>DOCUMENT NAME</b>	VINARES COMMERCIAL SEWER PROVISION	<b>REVISION</b>	-
<b>AUTHOR</b>	MOHAMED NAIL	<b>CREATED DATE</b>	16/07/2023
<b>LAST UPDATED BY</b>	MOHAMED NAIL	<b>LAST UPDATED DATE</b>	22/02/2024
<b>REVIEWED BY</b>	GEORGE	<b>REVIEWED DATE</b>	22/02/2024
<b>APPROVED BY</b>	MOHAMED YAMIN	<b>APPROVED DATE</b>	16/07/2023
<b>INFORMATION CLASSIFICATION SCHEME</b>	[Public, Open, Confidential, Confidential & Sensitive and Secret]		

REVISION HISTORY			
VER.	DATE	REV.	REVISION
X	DD/MM/YYYY	Z	(DRAFT)
X	DD/MM/YYYY	Z	(FEEDBACK FORMS INCLUDED)
X	DD/MM/YYYY	Z	(MODIFIED FEEDBACK FORMS)
X	DD/MM/YYYY	Z	(REFORMATTED FEEDBACK FORM)

<b>ARCHITECT</b>	NAIL
<b>STRUCTURAL ENG.</b>	YAMIN
<b>MECHANICAL ENG.</b>	GEORGE
<b>ELECTRICAL ENG.</b>	NAME
<b>SCALE</b>	AS GIVEN

SHEET CONTENT	

**SHEET NO.**  
  
**A01**



**LEGEND:**

- EXISTING RESIDENTIAL SEWER 150dia
- EXISTING SOAK PIT
- EXISTING RESIDENTIAL SEWER STACK
- EXISTING RAINWATER DOWNPIPE

## UNDERGROUND SERVICES AS-BUILT - V01

SCALE 1:200



### VINARES COMMERCIAL SEWER PROVISION HULHUMALE'

PLANNING AND DEVELOPMENT DEPARTMENT  
THIRD FLOOR, HDC BUILDING HULHUMALE'  
REPUBLIC OF MALDIVES  
TEL. +(960)3353535, FAX +(960)3358892  
EMAIL : planning@hdc.com.mv

The drawings, concept and design contained are the properties of HDC. Use of any kind or copy of whole or part of this drawing, concept or design or use on other projects or sites other than that specified on this drawing is strictly prohibited.

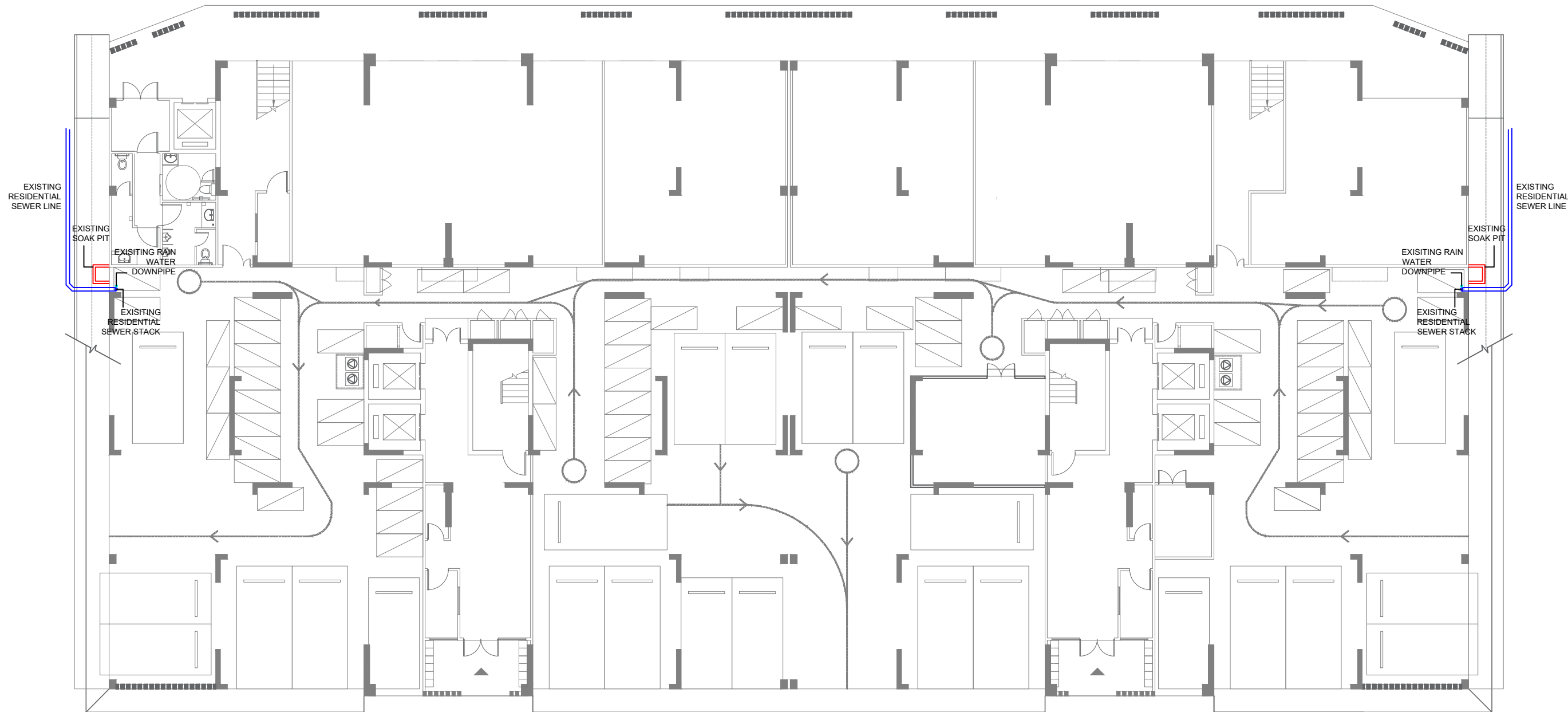
DOCUMENT ID	XXXX-SSSS-YYYY-(NUMBER)	VERSION	4
<b>DOCUMENT NAME</b>	VINARES COMMERCIAL SEWER PROVISION	<b>REVISION</b>	-
<b>AUTHOR</b>	MOHAMED NAIL	<b>CREATED DATE</b>	16/07/2023
<b>LAST UPDATED BY</b>	MOHAMED NAIL	<b>LAST UPDATED DATE</b>	22/02/2024
<b>REVIEWED BY</b>	GEORGE	<b>REVIEWED DATE</b>	22/02/2024
<b>APPROVED BY</b>	MOHAMED YAMIN	<b>APPROVED DATE</b>	16/07/2023
<b>INFORMATION CLASSIFICATION SCHEME</b>	[Public, Open, Confidential, Confidential & Sensitive and Secret]		

REVISION HISTORY			
VER.	DATE	REV.	REVISION
X	DD/MM/YYYY	Z	(DRAFT)
X	DD/MM/YYYY	Z	(FEEDBACK FORMS INCLUDED)
X	DD/MM/YYYY	Z	(MODIFIED FEEDBACK FORMS)
X	DD/MM/YYYY	Z	(REFORMATTED FEEDBACK FORM)

<b>ARCHITECT</b>	NAIL
<b>STRUCTURAL ENG.</b>	YAMIN
<b>MECHANICAL ENG.</b>	GEORGE
<b>ELECTRICAL ENG.</b>	NAME
<b>SCALE</b>	AS GIVEN

SHEET CONTENT

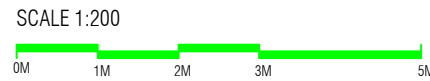
SHEET NO.
A02



**LEGEND:**

- EXISTING RESIDENTIAL SEWER 150da
- EXISTING SOAK PIT
- EXISTING RESIDENTIAL SEWER STACK
- EXISTING RAINWATER DOWNPIPE

**UNDERGROUND SERVICES AS-BUILT - V02**



**VINARES COMMERCIAL SEWER PROVISION**  
HULHUMALE'

PLANNING AND DEVELOPMENT DEPARTMENT  
THIRD FLOOR, HDC BUILDING HULHUMALE'  
REPUBLIC OF MALDIVES  
TEL. +(960)3353535, FAX +(960)3358892  
EMAIL : planning@hdc.com.mv

The drawings, concept and design contained are the properties of HDC. Use of any kind or copy of whole or part of this drawing, concept or design or use on other projects or sites other than that specified on this drawing is strictly prohibited.

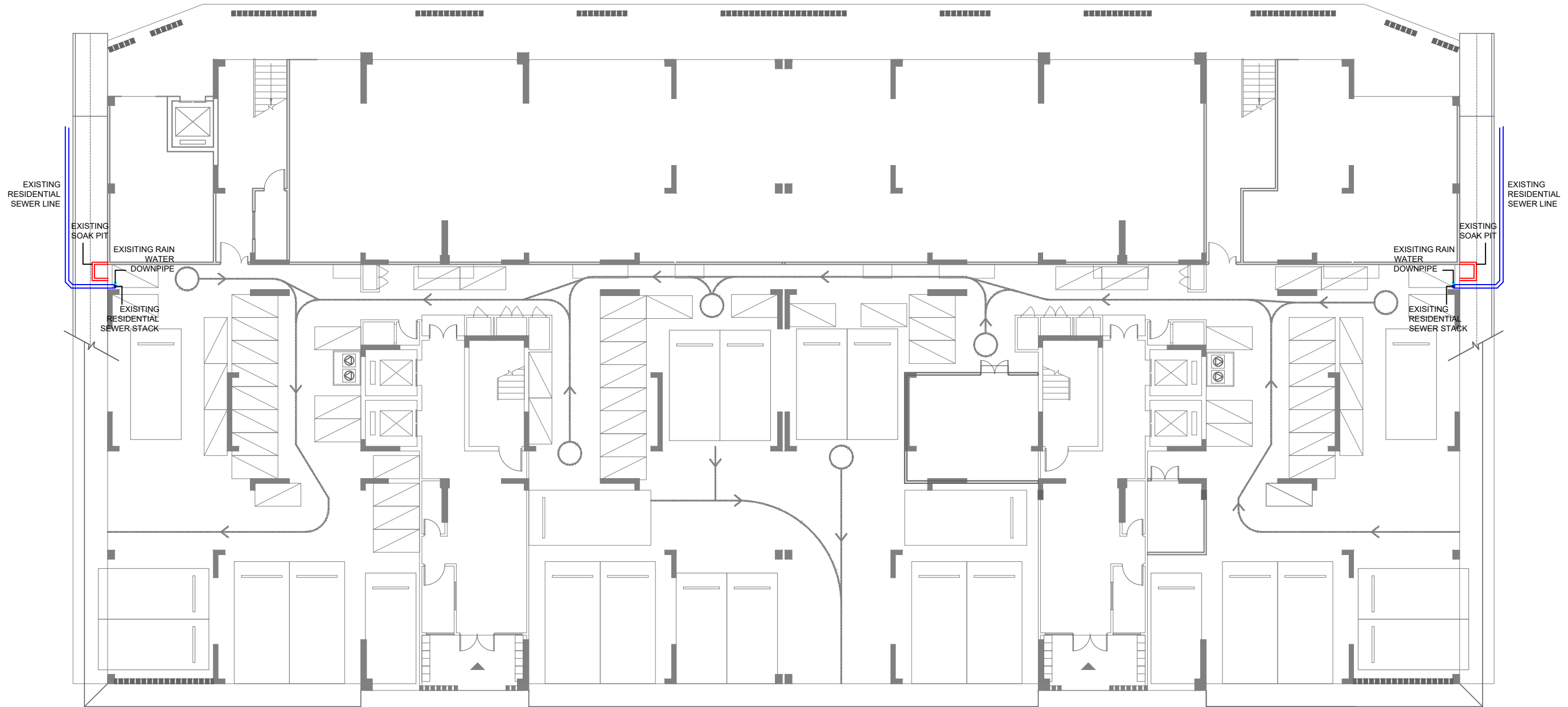
<b>DOCUMENT ID</b>	XXXXX-SSSS-YYYY-(NUMBER)	<b>VERSION</b>	4
<b>DOCUMENT NAME</b>	VINARES COMMERCIAL SEWER PROVISION	<b>REVISION</b>	-
<b>AUTHOR</b>	MOHAMED NAIL	<b>CREATED DATE</b>	16/07/2023
<b>LAST UPDATED BY</b>	MOHAMED NAIL	<b>LAST UPDATED DATE</b>	22/02/2024
<b>REVIEWED BY</b>	GEORGE	<b>REVIEWED DATE</b>	22/02/2024
<b>APPROVED BY</b>	MOHAMED YAMIN	<b>APPROVED DATE</b>	16/07/2023
<b>INFORMATION CLASSIFICATION SCHEME</b>	[Public, Open, Confidential, Confidential & Sensitive and Secret]		

REVISION HISTORY			
VER.	DATE	REV.	REVISION
X	DD/MM/YYYY	Z	(DRAFT)
X	DD/MM/YYYY	Z	(FEEDBACK FORMS INCLUDED)
X	DD/MM/YYYY	Z	(MODIFIED FEEDBACK FORMS)
X	DD/MM/YYYY	Z	(REFORMATTED FEEDBACK FORM)

<b>ARCHITECT</b>	NAIL
<b>STRUCTURAL ENG.</b>	YAMIN
<b>MECHANICAL ENG.</b>	GEORGE
<b>ELECTRICAL ENG.</b>	NAME
<b>SCALE</b>	AS GIVEN

<b>SHEET CONTENT</b>	----

**SHEET NO.**  
  
**A03**



**LEGEND:**

	EXISTING RESIDENTIAL SEWER 150dia
	EXISTING SOAK PIT
	EXISTING RESIDENTIAL SEWER STACK
	EXISTING RAINWATER DOWNPIPE

### UNDERGROUND SERVICES AS-BUILT - V03

SCALE 1:200



### VINARES COMMERCIAL SEWER PROVISION HULHUMALE'

PLANNING AND DEVELOPMENT DEPARTMENT  
THIRD FLOOR, HDC BUILDING HULHUMALE'  
REPUBLIC OF MALDIVES  
TEL. +(960)3353535, FAX +(960)3358892  
EMAIL : planning@hdc.com.mv

The drawings, concept and design contained are the properties of HDC. Use of any kind or copy of whole or part of this drawing, concept or design or use on other projects or sites other than that specified on this drawing is strictly prohibited.

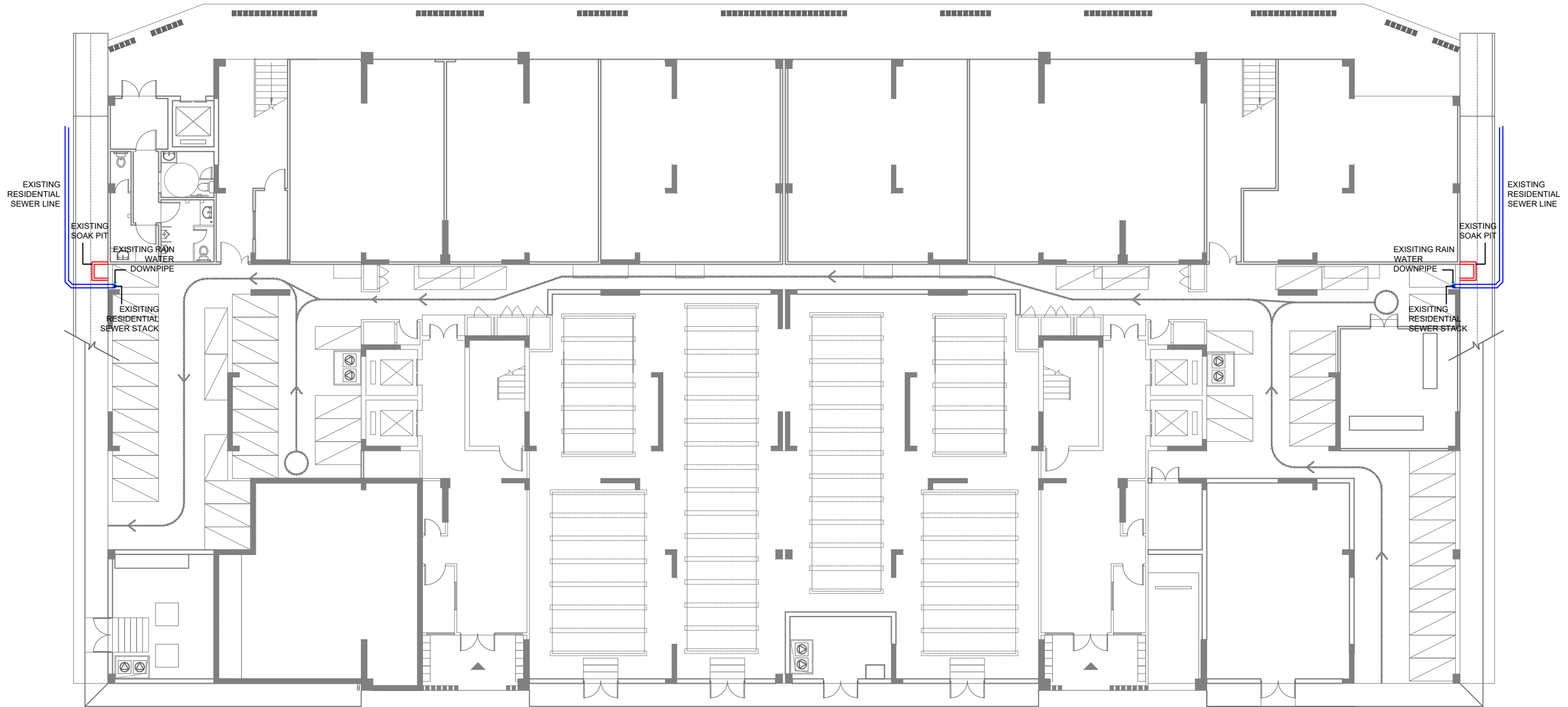
<b>DOCUMENT ID</b>	XXXXX-SSSS-YYYY-(NUMBER)	<b>VERSION</b>	4
<b>DOCUMENT NAME</b>	VINARES COMMERCIAL SEWER PROVISION	<b>REVISION</b>	-
<b>AUTHOR</b>	MOHAMED NAIL	<b>CREATED DATE</b>	16/07/2023
<b>LAST UPDATED BY</b>	MOHAMED NAIL	<b>LAST UPDATED DATE</b>	22/02/2024
<b>REVIEWED BY</b>	GEORGE	<b>REVIEWED DATE</b>	22/02/2024
<b>APPROVED BY</b>	MOHAMED YAMIN	<b>APPROVED DATE</b>	16/07/2023
<b>INFORMATION CLASSIFICATION SCHEME</b>	[Public, Open, Confidential, Confidential & Sensitive and Secret]		

REVISION HISTORY			
VER.	DATE	REV.	REVISION
X	DD/MM/YYYY	Z	(DRAFT)
X	DD/MM/YYYY	Z	(FEEDBACK FORMS INCLUDED)
X	DD/MM/YYYY	Z	(MODIFIED FEEDBACK FORMS)
X	DD/MM/YYYY	Z	(REFORMATTED FEEDBACK FORM)

<b>ARCHITECT</b>	NAIL
<b>STRUCTURAL ENG.</b>	YAMIN
<b>MECHANICAL ENG.</b>	GEORGE
<b>ELECTRICAL ENG.</b>	NAME
<b>SCALE</b>	AS GIVEN

<b>SHEET CONTENT</b>	----

**SHEET NO.**  
  
**A04**



**LEGEND:**

	EXISTING RESIDENTIAL SEWER 150dia
	EXISTING SOAK PIT
	EXISTING RESIDENTIAL SEWER STACK
	EXISTING RAINWATER DOWNPIPE

**UNDERGROUND SERVICES AS-BUILT - V04**



**VINARES COMMERCIAL  
SEWER PROVISION  
HULHUMALE'**

PLANNING AND DEVELOPMENT DEPARTMENT  
THIRD FLOOR, HDC BUILDING HULHUMALE'  
REPUBLIC OF MALDIVES  
TEL. +(960)3353535, FAX +(960)3358892  
EMAIL : planning@hdc.com.mv

The drawings, concept and design contained are the properties of HDC. Use of any kind or copy of whole or part of this drawing, concept or design or use on other projects or sites other than that specified on this drawing is strictly prohibited.

<b>DOCUMENT ID</b>	XXXXX-SSSS-YYYY-(NUMBER)	<b>VERSION</b>	4
<b>DOCUMENT NAME</b>	VINARES COMMERCIAL SEWER PROVISION	<b>REVISION</b>	-
<b>AUTHOR</b>	MOHAMED NAIL	<b>CREATED DATE</b>	16/07/2023
<b>LAST UPDATED BY</b>	MOHAMED NAIL	<b>LAST UPDATED DATE</b>	22/02/2024
<b>REVIEWED BY</b>	GEORGE	<b>REVIEWED DATE</b>	22/02/2024
<b>APPROVED BY</b>	MOHAMED YAMIN	<b>APPROVED DATE</b>	16/07/2023
<b>INFORMATION CLASSIFICATION SCHEME</b>	[Public, Open, Confidential, Confidential & Sensitive and Secret]		

REVISION HISTORY			
VER.	DATE	REV.	REVISION
X	DD/MM/YYYY	Z	(DRAFT)
X	DD/MM/YYYY	Z	(FEEDBACK FORMS INCLUDED)
X	DD/MM/YYYY	Z	(MODIFIED FEEDBACK FORMS)
X	DD/MM/YYYY	Z	(REFORMATTED FEEDBACK FORM)

<b>ARCHITECT</b>	NAIL
<b>STRUCTURAL ENG.</b>	YAMIN
<b>MECHANICAL ENG.</b>	GEORGE
<b>ELECTRICAL ENG.</b>	NAME
<b>SCALE</b>	AS GIVEN

<b>SHEET CONTENT</b>	----

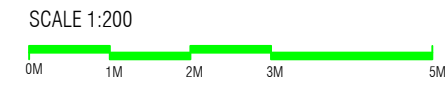
**SHEET NO.**  
  
**A05**



**LEGEND:**

	EXISTING RESIDENTIAL SEWER 150dia
	EXISTING SOAK PIT
	EXISTING RESIDENTIAL SEWER STACK
	EXISTING RAINWATER DOWNPIPE

### UNDERGROUND SERVICES AS-BUILT - V05



### VINARES COMMERCIAL SEWER PROVISION HULHUMALE'

PLANNING AND DEVELOPMENT DEPARTMENT  
THIRD FLOOR, HDC BUILDING HULHUMALE'  
REPUBLIC OF MALDIVES  
TEL. +(960)3353535, FAX +(960)3358892  
EMAIL : planning@hdc.com.mv

The drawings, concept and design contained are the properties of HDC. Use of any kind or copy of whole or part of this drawing, concept or design or use on other projects or sites other than that specified on this drawing is strictly prohibited.

<b>DOCUMENT ID</b>	XXXXX-SSSS-YYYY-(NUMBER)	<b>VERSION</b>	4
<b>DOCUMENT NAME</b>	VINARES COMMERCIAL SEWER PROVISION	<b>REVISION</b>	-
<b>AUTHOR</b>	MOHAMED NAIL	<b>CREATED DATE</b>	16/07/2023
<b>LAST UPDATED BY</b>	MOHAMED NAIL	<b>LAST UPDATED DATE</b>	22/02/2024
<b>REVIEWED BY</b>	GEORGE	<b>REVIEWED DATE</b>	22/02/2024
<b>APPROVED BY</b>	MOHAMED YAMIN	<b>APPROVED DATE</b>	16/07/2023
<b>INFORMATION CLASSIFICATION SCHEME</b>	[Public, Open, Confidential, Confidential & Sensitive and Secret]		

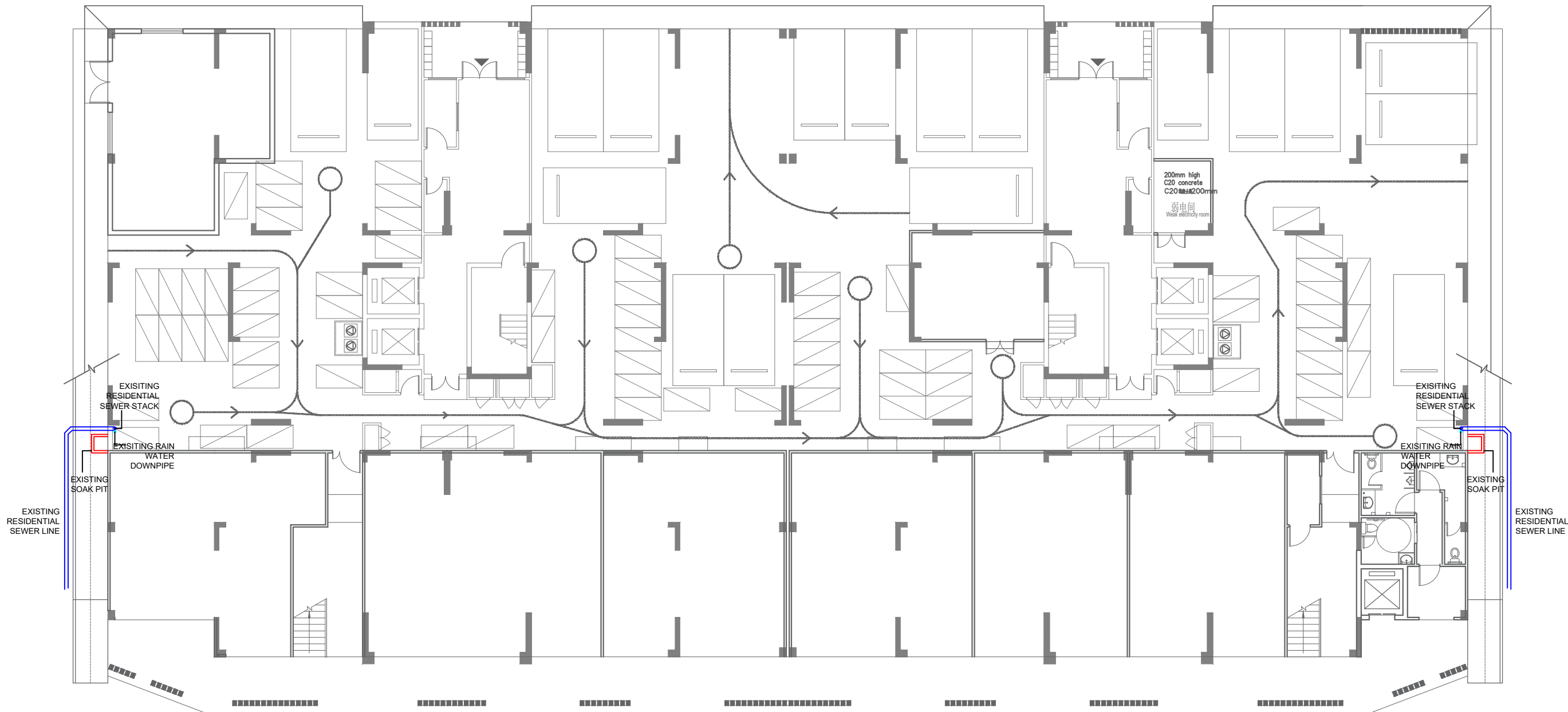
REVISION HISTORY			
VER.	DATE	REV.	REVISION
X	DD/MM/YYYY	Z	(DRAFT)
X	DD/MM/YYYY	Z	(FEEDBACK FORMS INCLUDED)
X	DD/MM/YYYY	Z	(MODIFIED FEEDBACK FORMS)
X	DD/MM/YYYY	Z	(REFORMATTED FEEDBACK FORM)

<b>ARCHITECT</b>	NAIL
<b>STRUCTURAL ENG.</b>	YAMIN
<b>MECHANICAL ENG.</b>	GEORGE
<b>ELECTRICAL ENG.</b>	NAME
<b>SCALE</b>	AS GIVEN

<b>SHEET CONTENT</b>	---

**SHEET NO.**

# A06



# UNDERGROUND SERVICES AS-BUILT - V06

SCALE 1:200



LEGEND:	
	EXISTING RESIDENTIAL SEWER 150dia
	EXISTING SOAK PIT
	EXISTING RESIDENTIAL SEWER STACK
	EXISTING RAINWATER DOWNPIPE



## VINARES COMMERCIAL SEWER PROVISION HULHUMALE'

PLANNING AND DEVELOPMENT DEPARTMENT  
THIRD FLOOR, HDC BUILDING HULHUMALE'  
REPUBLIC OF MALDIVES  
TEL. +(960)3353535, FAX +(960)3358892  
EMAIL : planning@hdc.com.mv

The drawings, concept and design contained are the properties of HDC. Use of any kind or copy of whole or part of this drawing, concept or design or use on other projects or sites other than that specified on this drawing is strictly prohibited.

DOCUMENT ID	XXXXX-SSSS-YYYY-(NUMBER)	VERSION	4
DOCUMENT NAME	VINARES COMMERCIAL SEWER PROVISION	REVISION	-
AUTHOR	MOHAMED NAIL	CREATED DATE	16/07/2023
LAST UPDATED BY	MOHAMED NAIL	LAST UPDATED DATE	22/02/2024
REVIEWED BY	GEORGE	REVIEWED DATE	22/02/2024
APPROVED BY	MOHAMED YAMIN	APPROVED DATE	16/07/2023
INFORMATION CLASSIFICATION SCHEME	[Public, Open, Confidential, Confidential & Sensitive and Secret]		

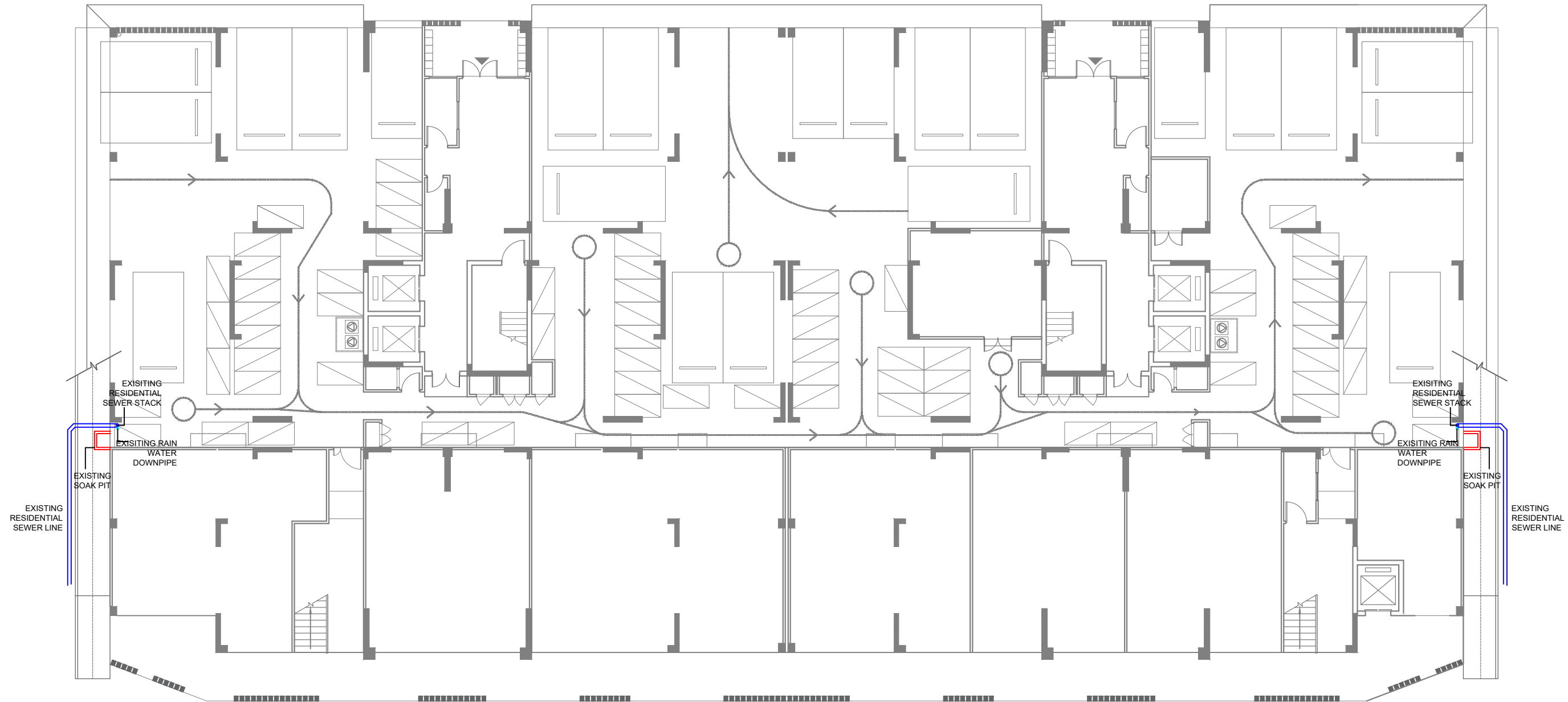
REVISION HISTORY			
VER.	DATE	REV.	REVISION
X	DD/MM/YYYY	Z	(DRAFT)
X	DD/MM/YYYY	Z	(FEEDBACK FORMS INCLUDED)
X	DD/MM/YYYY	Z	(MODIFIED FEEDBACK FORMS)
X	DD/MM/YYYY	Z	(REFORMATTED FEEDBACK FORM)

ARCHITECT	NAIL
STRUCTURAL ENG.	YAMIN
MECHANICAL ENG.	GEORGE
ELECTRICAL ENG.	NAME
SCALE	AS GIVEN

SHEET CONTENT

SHEET NO.  
**A07**





**LEGEND:**

	EXISTING RESIDENTIAL SEWER 150dia
	EXISTING SOAK PIT
	EXISTING RESIDENTIAL SEWER STACK
	EXISTING RAINWATER DOWNPIPE

## UNDERGROUND SERVICES AS-BUILT - V07

SCALE 1:200



### VINARES COMMERCIAL SEWER PROVISION HULHUMALE'

PLANNING AND DEVELOPMENT DEPARTMENT  
THIRD FLOOR, HDC BUILDING HULHUMALE'  
REPUBLIC OF MALDIVES  
TEL. +(960)3353535, FAX +(960)3358892  
EMAIL : planning@hdc.com.mv

The drawings, concept and design contained are the properties of HDC. Use of any kind or copy of whole or part of this drawing, concept or design or use on other projects or sites other than that specified on this drawing is strictly prohibited.

<b>DOCUMENT ID</b>	XXXXX-SSSS-YYYY-(NUMBER)	<b>VERSION</b>	4
<b>DOCUMENT NAME</b>	VINARES COMMERCIAL SEWER PROVISION	<b>REVISION</b>	-
<b>AUTHOR</b>	MOHAMED NAIL	<b>CREATED DATE</b>	16/07/2023
<b>LAST UPDATED BY</b>	MOHAMED NAIL	<b>LAST UPDATED DATE</b>	22/02/2024
<b>REVIEWED BY</b>	GEORGE	<b>REVIEWED DATE</b>	22/02/2024
<b>APPROVED BY</b>	MOHAMED YAMIN	<b>APPROVED DATE</b>	16/07/2023
<b>INFORMATION CLASSIFICATION SCHEME</b>	[Public, Open, Confidential, Confidential & Sensitive and Secret]		

REVISION HISTORY			
VER.	DATE	REV.	REVISION
X	DD/MM/YYYY	Z	(DRAFT)
X	DD/MM/YYYY	Z	(FEEDBACK FORMS INCLUDED)
X	DD/MM/YYYY	Z	(MODIFIED FEEDBACK FORMS)
X	DD/MM/YYYY	Z	(REFORMATTED FEEDBACK FORM)

<b>ARCHITECT</b>	NAIL
<b>STRUCTURAL ENG.</b>	YAMIN
<b>MECHANICAL ENG.</b>	GEORGE
<b>ELECTRICAL ENG.</b>	NAME
<b>SCALE</b>	AS GIVEN

<b>SHEET CONTENT</b>	----

**SHEET NO.**  
  
**A08**



### UNDERGROUND SERVICES AS-BUILT - V08

SCALE 1:200



LEGEND:	
	EXISTING RESIDENTIAL SEWER 150dia
	EXISTING SOAK PIT
	EXISTING RESIDENTIAL SEWER STACK
	EXISTING RAINWATER DOWNPIPE



PLANNING AND DEVELOPMENT DEPARTMENT  
THIRD FLOOR, HDC BUILDING HULHUMALE'  
REPUBLIC OF MALDIVES  
TEL. +(960)3353535, FAX +(960)3358892  
EMAIL : planning@hdc.com.mv

### VINARES COMMERCIAL SEWER PROVISION HULHUMALE'

The drawings, concept and design contained are the properties of HDC. Use of any kind or copy of whole or part of this drawing, concept or design or use on other projects or sites other than that specified on this drawing is strictly prohibited.

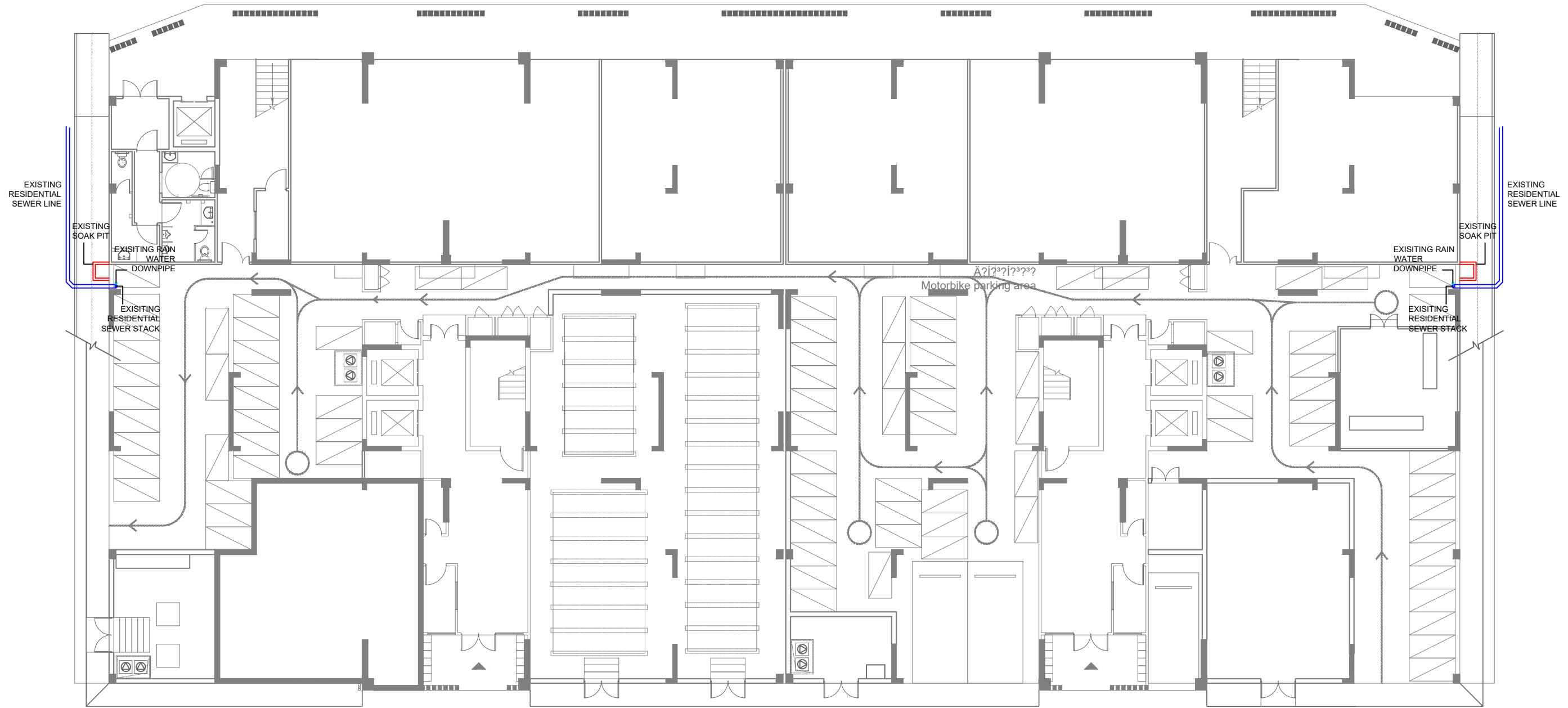
DOCUMENT ID	XXXXX-SSSS-YYYY-(NUMBER)	VERSION	4
DOCUMENT NAME	VINARES COMMERCIAL SEWER PROVISION	REVISION	-
AUTHOR	MOHAMED NAIL	CREATED DATE	16/07/2023
LAST UPDATED BY	MOHAMED NAIL	LAST UPDATED DATE	22/02/2024
REVIEWED BY	GEORGE	REVIEWED DATE	22/02/2024
APPROVED BY	MOHAMED YAMIN	APPROVED DATE	16/07/2023
INFORMATION CLASSIFICATION SCHEME	[Public, Open, Confidential, Confidential & Sensitive and Secret]		

REVISION HISTORY			
VER.	DATE	REV.	REVISION
X	DD/MM/YYYY	Z	(DRAFT)
X	DD/MM/YYYY	Z	(FEEDBACK FORMS INCLUDED)
X	DD/MM/YYYY	Z	(MODIFIED FEEDBACK FORMS)
X	DD/MM/YYYY	Z	(REFORMATTED FEEDBACK FORM)

<b>ARCHITECT</b>	NAIL
<b>STRUCTURAL ENG.</b>	YAMIN
<b>MECHANICAL ENG.</b>	GEORGE
<b>ELECTRICAL ENG.</b>	NAME
<b>SCALE</b>	AS GIVEN

SHEET CONTENT

SHEET NO.  
**A09**



**LEGEND:**

- EXISTING RESIDENTIAL SEWER 150dia
- EXISTING SOAK PIT
- EXISTING RESIDENTIAL SEWER STACK
- EXISTING RAINWATER DOWNPIPE

### UNDERGROUND SERVICES AS-BUILT - V09

SCALE 1:200



### VINARES COMMERCIAL SEWER PROVISION HULHUMALE'

PLANNING AND DEVELOPMENT DEPARTMENT  
THIRD FLOOR, HDC BUILDING HULHUMALE'  
REPUBLIC OF MALDIVES  
TEL. +(960)3353535, FAX +(960)3358892  
EMAIL : planning@hdc.com.mv

The drawings, concept and design contained are the properties of HDC. Use of any kind or copy of whole or part of this drawing, concept or design or use on other projects or sites other than that specified on this drawing is strictly prohibited.

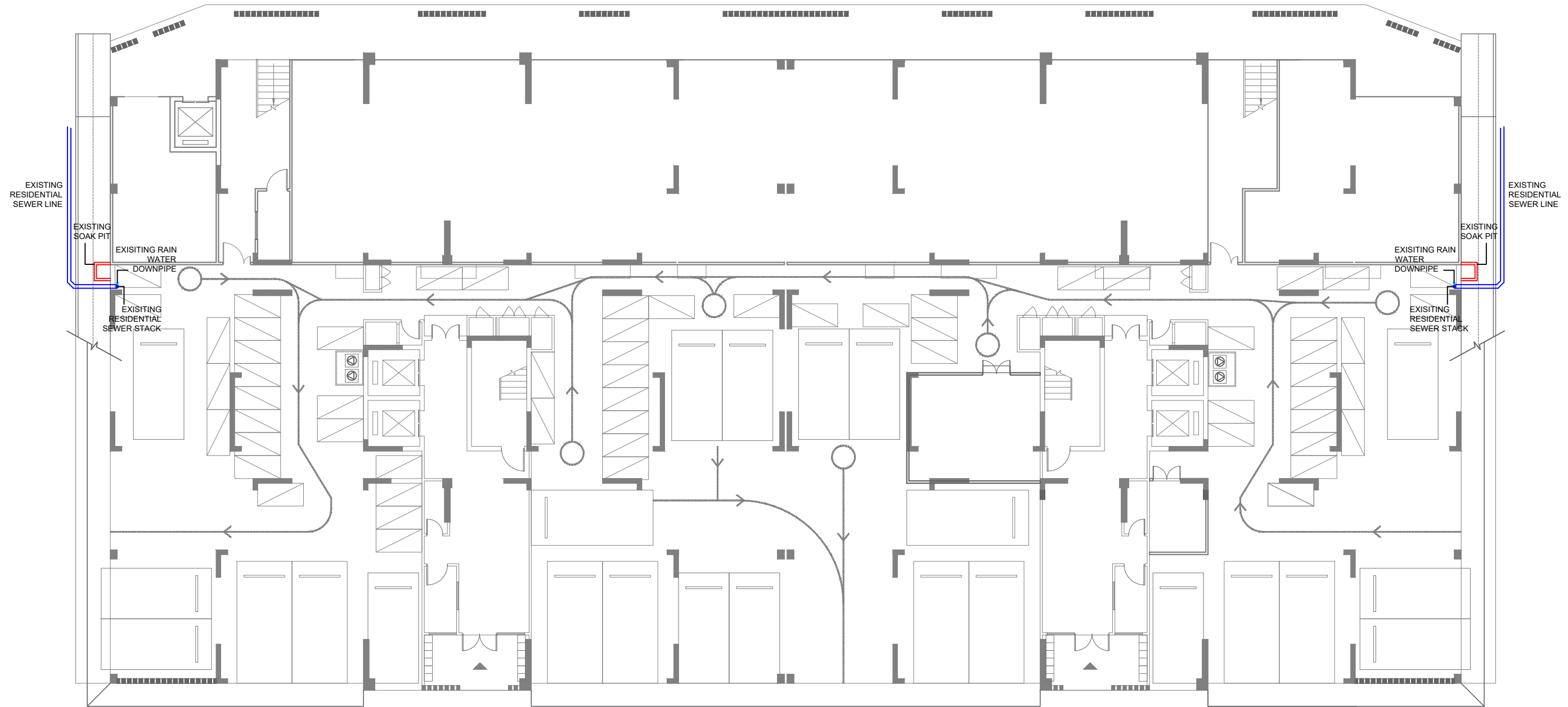
DOCUMENT ID	XXXXX-SSSS-YYYY-(NUMBER)	VERSION	4
<b>DOCUMENT NAME</b>	VINARES COMMERCIAL SEWER PROVISION	<b>REVISION</b>	-
<b>AUTHOR</b>	MOHAMED NAIL	<b>CREATED DATE</b>	16/07/2023
<b>LAST UPDATED BY</b>	MOHAMED NAIL	<b>LAST UPDATED DATE</b>	22/02/2024
<b>REVIEWED BY</b>	GEORGE	<b>REVIEWED DATE</b>	22/02/2024
<b>APPROVED BY</b>	MOHAMED YAMIN	<b>APPROVED DATE</b>	16/07/2023
<b>INFORMATION CLASSIFICATION SCHEME</b>	[Public, Open, Confidential, Confidential & Sensitive and Secret]		

REVISION HISTORY			
VER.	DATE	REV.	REVISION
X	DD/MM/YYYY	Z	(DRAFT)
X	DD/MM/YYYY	Z	(FEEDBACK FORMS INCLUDED)
X	DD/MM/YYYY	Z	(MODIFIED FEEDBACK FORMS)
X	DD/MM/YYYY	Z	(REFORMATTED FEEDBACK FORM)

<b>ARCHITECT</b>	NAIL
<b>STRUCTURAL ENG.</b>	YAMIN
<b>MECHANICAL ENG.</b>	GEORGE
<b>ELECTRICAL ENG.</b>	NAME
<b>SCALE</b>	AS GIVEN

SHEET CONTENT
---

**SHEET NO.**  
  
**A10**



**LEGEND:**

	EXISTING RESIDENTIAL SEWER 150dia
	EXISTING SOAK PIT
	EXISTING RESIDENTIAL SEWER STACK
	EXISTING RAINWATER DOWNPIPE

## UNDERGROUND SERVICES AS-BUILT - V10

SCALE 1:200



### VINARES COMMERCIAL SEWER PROVISION HULHUMALE'

PLANNING AND DEVELOPMENT DEPARTMENT  
THIRD FLOOR, HDC BUILDING HULHUMALE'  
REPUBLIC OF MALDIVES  
TEL. +(960)3353535, FAX +(960)3358892  
EMAIL : planning@hdc.com.mv

The drawings, concept and design contained are the properties of HDC. Use of any kind or copy of whole or part of this drawing, concept or design or use on other projects or sites other than that specified on this drawing is strictly prohibited.

<b>DOCUMENT ID</b>	XXXXX-SSSS-YYYY-(NUMBER)	<b>VERSION</b>	4
<b>DOCUMENT NAME</b>	VINARES COMMERCIAL SEWER PROVISION	<b>REVISION</b>	-
<b>AUTHOR</b>	MOHAMED NAIL	<b>CREATED DATE</b>	16/07/2023
<b>LAST UPDATED BY</b>	MOHAMED NAIL	<b>LAST UPDATED DATE</b>	22/02/2024
<b>REVIEWED BY</b>	GEORGE	<b>REVIEWED DATE</b>	22/02/2024
<b>APPROVED BY</b>	MOHAMED YAMIN	<b>APPROVED DATE</b>	16/07/2023
<b>INFORMATION CLASSIFICATION SCHEME</b>	[Public, Open, Confidential, Confidential & Sensitive and Secret]		

REVISION HISTORY			
VER.	DATE	REV.	REVISION
X	DD/MM/YYYY	Z	(DRAFT)
X	DD/MM/YYYY	Z	(FEEDBACK FORMS INCLUDED)
X	DD/MM/YYYY	Z	(MODIFIED FEEDBACK FORMS)
X	DD/MM/YYYY	Z	(REFORMATTED FEEDBACK FORM)

<b>ARCHITECT</b>	NAIL
<b>STRUCTURAL ENG.</b>	YAMIN
<b>MECHANICAL ENG.</b>	GEORGE
<b>ELECTRICAL ENG.</b>	NAME
<b>SCALE</b>	AS GIVEN

<b>SHEET CONTENT</b>	----

**SHEET NO.**  
  
**A11**