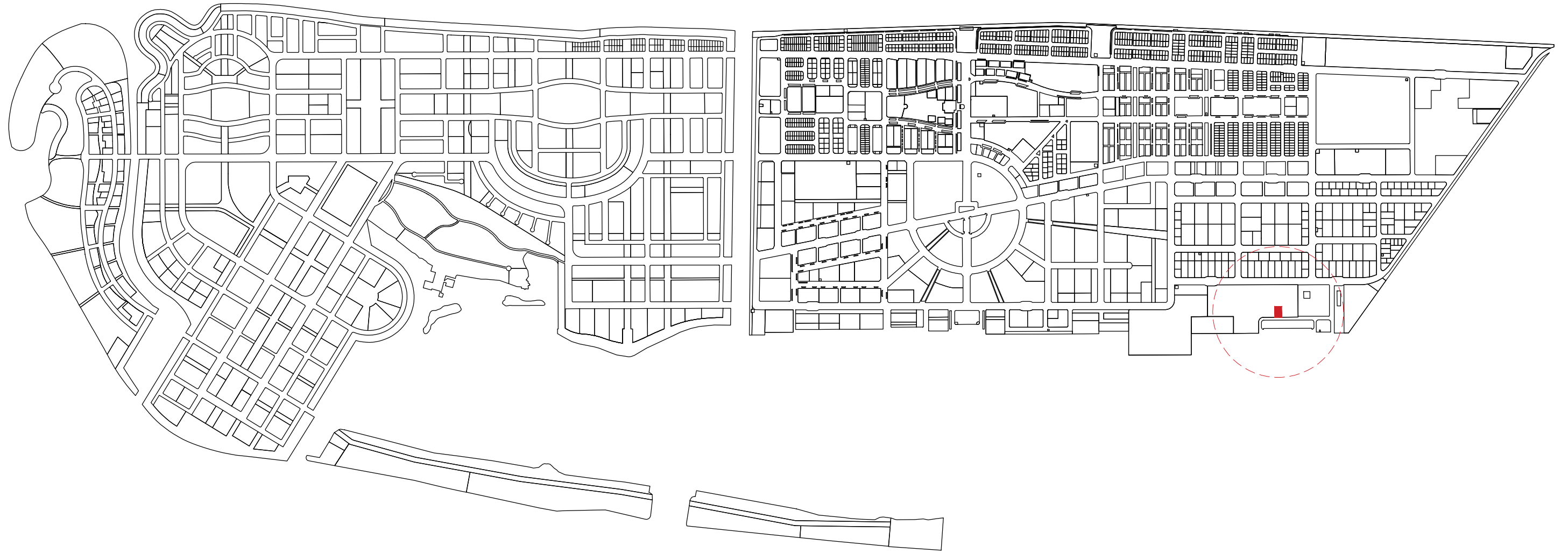


PROCUREMENT WAREHOUSE FIRE DRAWING

PROPOSED DESIGNS FOR FIRE PROTECTION
SERVICES DRAWING
14 MARCH 2024

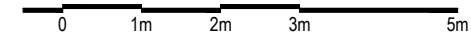


HOUSING
DEVELOPMENT
CORPORATION



LOCATION PLAN

NTS



**HOUSING
DEVELOPMENT
CORPORATION**

PLANNING AND DEVELOPMENT DEPARTMENT
THIRD FLOOR, HDC BUILDING HULHUMALE'
REPUBLIC OF MALDIVES
TEL. +(960)3353535, FAX +(960)3358892
EMAIL : planning@hdc.com.mv

**PROCUREMENT WAREHOUSE
- FIRE PROTECTION
HULHUMALE'**

The drawings, concept and design contained are the properties of HDC. Use of any kind or copy of whole or part of this drawing, concept or design or use on other projects or sites other than that specified on this drawing is strictly prohibited.

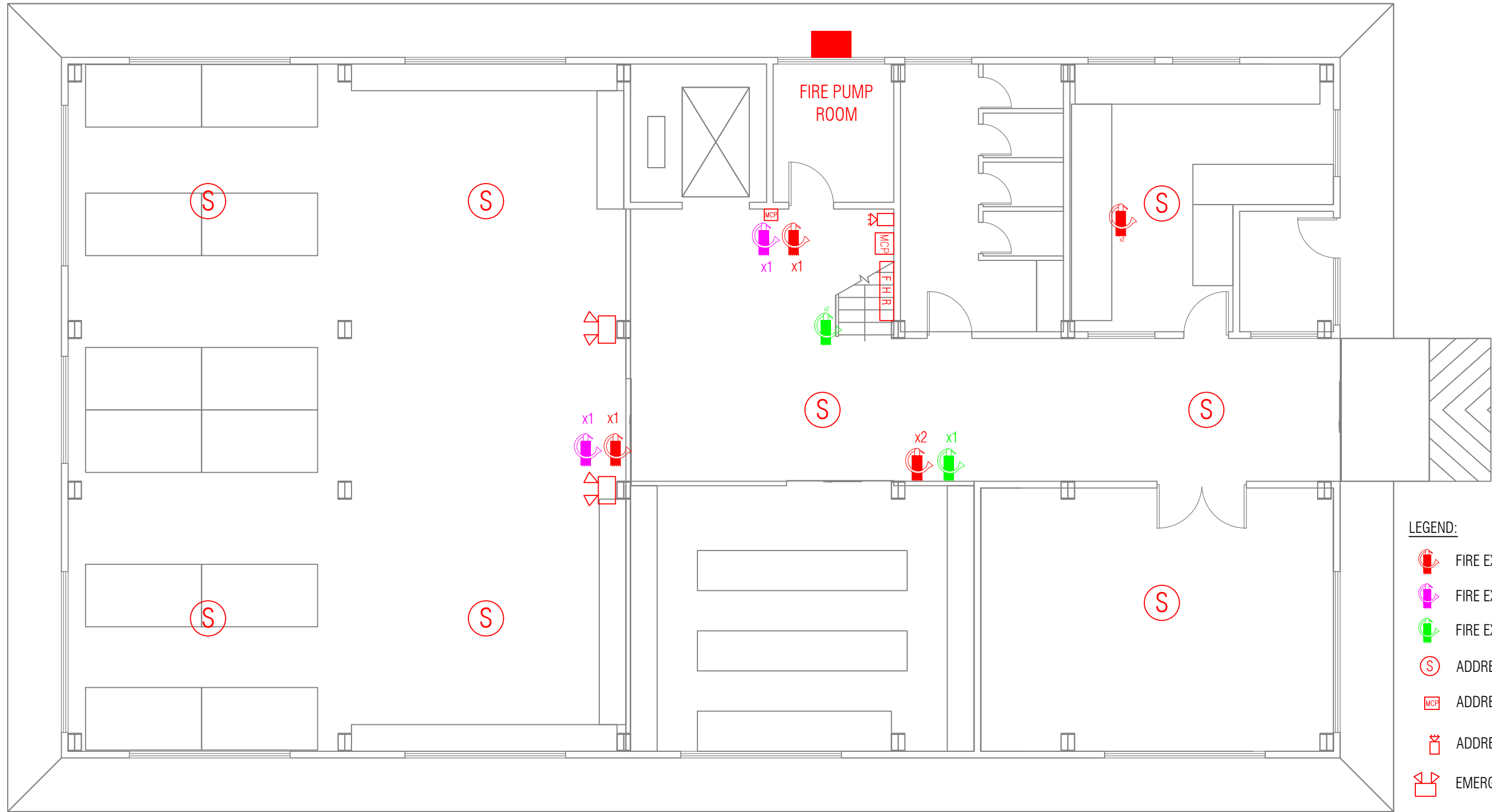
DOCUMENT ID	XXXXX-SSSS-YYYY-(NUMBER)	VERSION	0
DOCUMENT NAME	WAREHOUSE FIRE DRAWING	REVISION	-
AUTHOR	MOHAMED NAIL	CREATED DATE	05/10/2023
LAST UPDATED BY	MOHAMED NAIL	LAST UPDATED DATE	14/03/2023
REVIEWED BY	GEORGE	REVIEWED DATE	14/03/2023
APPROVED BY	MOHAMED YAMIN	APPROVED DATE	05/10/2023
INFORMATION CLASSIFICATION SCHEME	(Public, Open, Confidential, Confidential & Sensitive and Secret)		

REVISION HISTORY			
VER.	DATE	REV.	REVISION
X	DD/MM/YYYY	Z	(DRAFT)
X	DD/MM/YYYY	Z	(FEEDBACK FORMS INCLUDED)
X	DD/MM/YYYY	Z	(MODIFIED FEEDBACK FORMS)
X	DD/MM/YYYY	Z	(REFORMATTED FEEDBACK FORM)

ARCHITECT	Nnail
STRUCTURAL ENG.	-
MECHANICAL ENG.	George
ELECTRICAL ENG.	-
SCALE	AS GIVEN

SHEET CONTENT

SHEET NO.
A01



- LEGEND:**
- FIRE EXTINGUISHER 9kg DCP
 - FIRE EXTINGUISHER 9L WATER
 - FIRE EXTINGUISHER 2kg CO2
 - ADDRESSABLE SMOKE DETECTOR
 - ADDRESSABLE MANUAL CALL POINT
 - ADDRESSABLE SOUNDER
 - EMERGENCY LIGHT
 - FIRE ALARM CONTROL PANEL
 - FIRE HOSE REEL
 - BREACHING INLET

GROUND FLOOR - EXISTING FIRE FIGHTING SYSTEM
SCALE 1:100



PLANNING AND DEVELOPMENT DEPARTMENT
THIRD FLOOR, HDC BUILDING HULHUMALE'
REPUBLIC OF MALDIVES
TEL. +(960)3353535, FAX +(960)3358892
EMAIL : planning@hdc.com.mv

**PROCUREMENT WAREHOUSE
- FIRE PROTECTION**

HULHUMALE'

The drawings, concept and design contained are the properties of HDC. Use of any kind or copy of whole or part of this drawing, concept or design or use on other projects or sites other than that specified on this drawing is strictly prohibited.

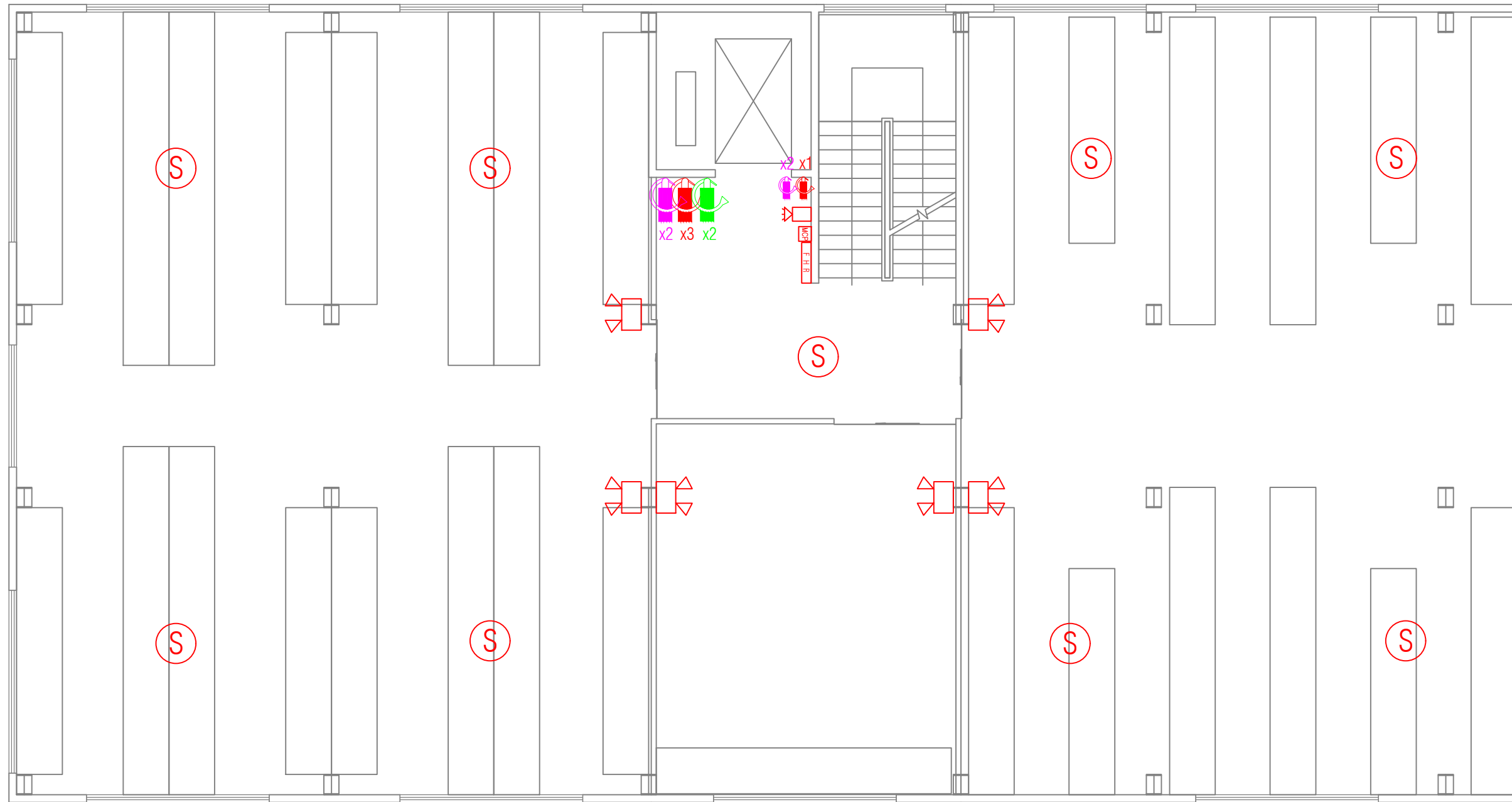
DOCUMENT ID	XXXXX-SSSS-YYYY-(NUMBER)	VERSION	0
DOCUMENT NAME	WAREHOUSE FIRE DRAWING	REVISION	-
AUTHOR	MOHAMED NAIL	CREATED DATE	05/10/2023
LAST UPDATED BY	MOHAMED NAIL	LAST UPDATED DATE	14/03/2023
REVIEWED BY	GEORGE	REVIEWED DATE	14/03/2023
APPROVED BY	MOHAMED YAMIN	APPROVED DATE	05/10/2023
INFORMATION CLASSIFICATION SCHEME	(Public, Open, Confidential, Confidential & Sensitive and Secret)		

REVISION HISTORY			
VER.	DATE	REV.	REVISION
X	DD/MM/YYYY	Z	(DRAFT)
X	DD/MM/YYYY	Z	(FEEDBACK FORMS INCLUDED)
X	DD/MM/YYYY	Z	(MODIFIED FEEDBACK FORMS)
X	DD/MM/YYYY	Z	(REFORMATTED FEEDBACK FORM)









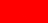
ARCHITECT	Naail
STRUCTURAL ENG.	-
MECHANICAL ENG.	George
ELECTRICAL ENG.	-
SCALE	AS GIVEN

SHEET CONTENT

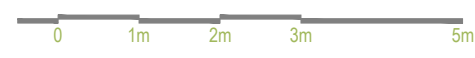
SHEET NO.
A02



LEGEND:

-  FIRE EXTINGUISHER 9kg DCP
-  FIRE EXTINGUISHER 9L WATER
-  FIRE EXTINGUISHER 2kg CO2
-  ADDRESSABLE SMOKE DETECTOR
-  ADDRESSABLE MANUAL CALL POINT
-  ADDRESSABLE SOUNDER
-  EMERGENCY LIGHT
-  FIRE ALARM CONTROL PANEL
-  FIRE HOSE REEL
-  BREACHING INLET

FIRST FLOOR - EXISTING FIRE FIGHTING SYSTEM
SCALE 1:100

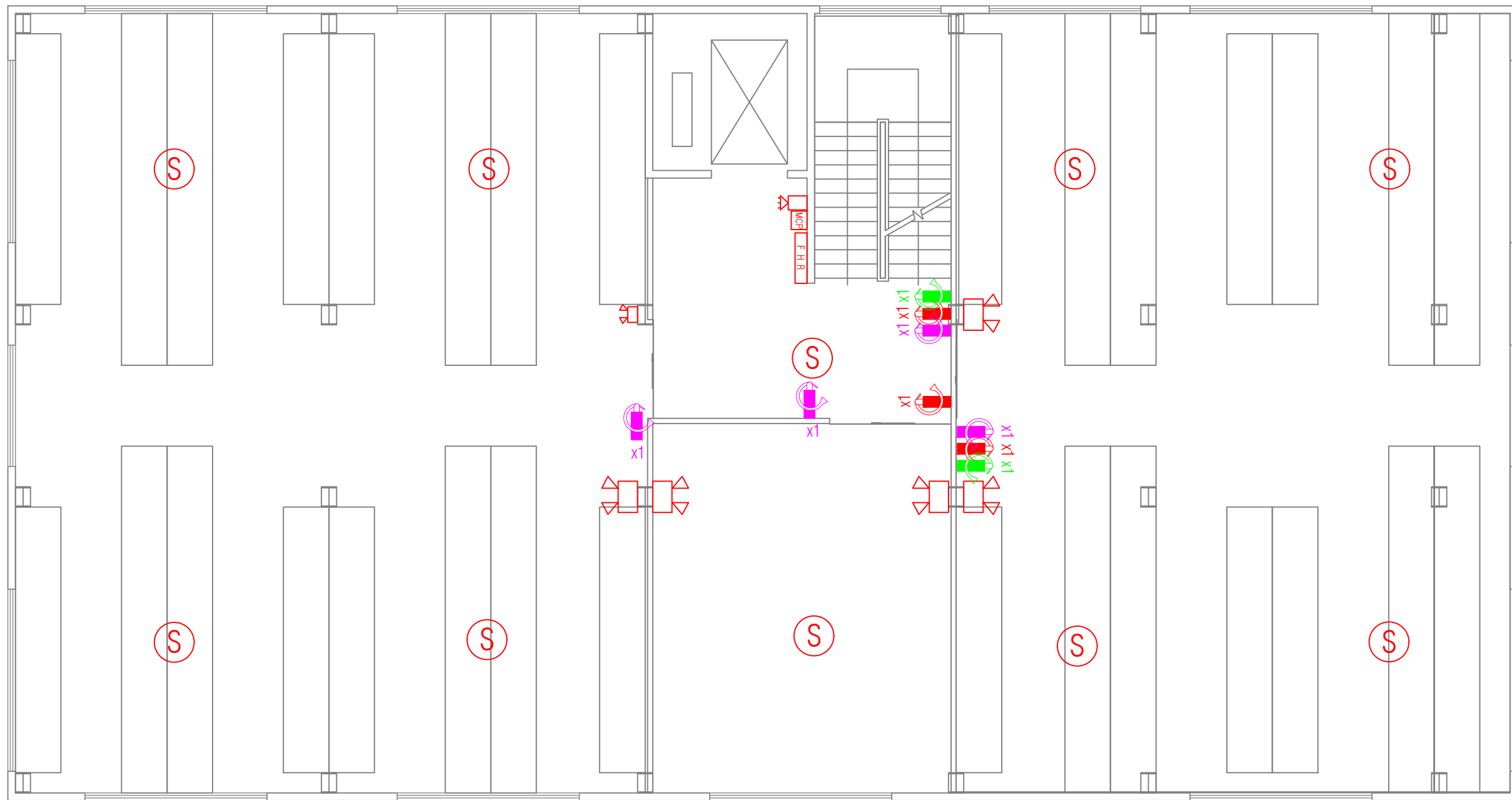


DOCUMENT ID	XXXX-SSSS-YYYY-(NUMBER)	VERSION	0
DOCUMENT NAME	WAREHOUSE FIRE DRAWING	REVISION	-
AUTHOR	MOHAMED NAIL	CREATED DATE	05/10/2023
LAST UPDATED BY	MOHAMED NAIL	LAST UPDATED DATE	14/03/2023
REVIEWED BY	GEORGE	REVIEWED DATE	14/03/2023
APPROVED BY	MOHAMED YAMIN	APPROVED DATE	05/10/2023
INFORMATION CLASSIFICATION SCHEME	(Public, Open, Confidential, Confidential & Sensitive and Secret)		











REVISION HISTORY			
VER.	DATE	REV.	REVISION
X	DD/MM/YYYY	Z	(DRAFT)
X	DD/MM/YYYY	Z	(FEEDBACK FORMS INCLUDED)
X	DD/MM/YYYY	Z	(MODIFIED FEEDBACK FORMS)
X	DD/MM/YYYY	Z	(REFORMATTED FEEDBACK FORM)

ARCHITECT	Naail
STRUCTURAL ENG.	-
MECHANICAL ENG.	George
ELECTRICAL ENG.	-
SCALE	AS GIVEN

SHEET CONTENT



LEGEND:

-  FIRE EXTINGUISHER 9kg DCP
-  FIRE EXTINGUISHER 9L WATER
-  FIRE EXTINGUISHER 2kg CO2
-  ADDRESSABLE SMOKE DETECTOR
-  ADDRESSABLE MANUAL CALL POINT
-  ADDRESSABLE SOUNDER
-  EMERGENCY LIGHT
-  FIRE ALARM CONTROL PANEL
-  FIRE HOSE REEL
-  BREACHING INLET

SECOND FLOOR - EXISTING FIRE FIGHTING SYSTEM

SCALE 1:100



PLANNING AND DEVELOPMENT DEPARTMENT
 THIRD FLOOR, HDC BUILDING HULHUMALE'
 REPUBLIC OF MALDIVES
 TEL. +(960)3353535, FAX +(960)3358892
 EMAIL : planning@hdc.com.mv

**PROCUREMENT WAREHOUSE
 - FIRE PROTECTION**

HULHUMALE'

The drawings, concept and design contained are the properties of HDC. Use of any kind or copy of whole or part of this drawing, concept or design or use on other projects or sites other than that specified on this drawing is strictly prohibited.

DOCUMENT ID	XXXX-SSSS-YYYY-(NUMBER)	VERSION	0
DOCUMENT NAME	WAREHOUSE FIRE DRAWING	REVISION	-
AUTHOR	MOHAMED NAIL	CREATED DATE	05/10/2023
LAST UPDATED BY	MOHAMED NAIL	LAST UPDATED DATE	14/03/2023
REVIEWED BY	GEORGE	REVIEWED DATE	14/03/2023
APPROVED BY	MOHAMED YAMIN	APPROVED DATE	05/10/2023
INFORMATION CLASSIFICATION SCHEME	(Public, Open, Confidential, Confidential & Sensitive and Secret)		

REVISION HISTORY			
VER.	DATE	REV.	REVISION
X	DD/MM/YYYY	Z	(DRAFT)
X	DD/MM/YYYY	Z	(FEEDBACK FORMS INCLUDED)
X	DD/MM/YYYY	Z	(MODIFIED FEEDBACK FORMS)
X	DD/MM/YYYY	Z	(REFORMATTED FEEDBACK FORM)

ARCHITECT	Naail
STRUCTURAL ENG.	-
MECHANICAL ENG.	George
ELECTRICAL ENG.	-
SCALE	AS GIVEN

SHEET CONTENT

SHEET NO.

A04